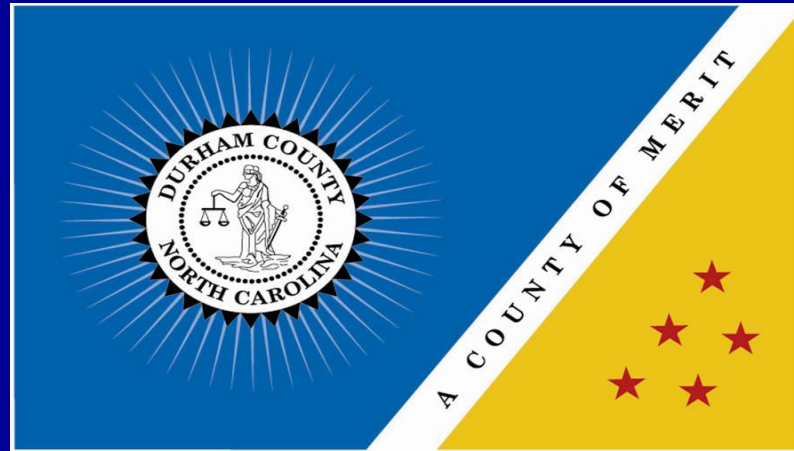


# Durham County 2007 State of the County Address

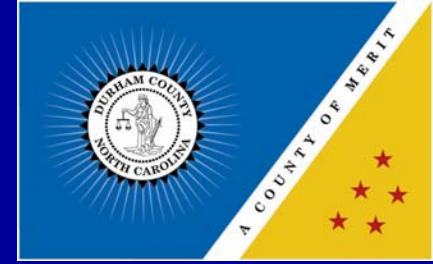


# National Accolades



- #1 MSA in the nation for % of workforce in the “Creative Class”
- #2 Best Green Cities
- #3 Best Small City for Relocating Families
- #3 for African Americans to work, live and play-Black Enterprise
- #7 for Business and Careers-Forbes
- #15 Best Place to Live in the USA
- Top 20 Places to Educate Your Child
- 100 Best Communities for Young People
- Top Ten Tech Town-Wired

# Record setting tax collections



## Top Ten Counties

	% 's	% 's	% 's	% 's	% 's	Amt. Inc/Dec in %
Buncombe County	98.25	98.69	98.89	98.90	99.15	0.25
Durham County	<b>97.68</b>	<b>98.06</b>	<b>98.23</b>	<b>98.50</b>	<b>98.74</b>	0.24
Wake County	98.4	98.81	98.87	98.83	98.68	-0.15
Guilford County	98.92	98.73	98.65	98.79	98.63	-0.16
New Hanover County	97.8	98.12	98.33	98.45	98.27	-0.18
Forsyth County	97.79	98.11	98.00	98.26	98.23	-0.03
Mecklenburg County	97.5	98.68	97.32	N/A	97.5	
Onslow County	95.75	95.94	96.03	95.74	96.81	1.07
Cumberland County	94.92	95.41	96.06	96.45	96.69	0.24
Gaston County	94.6	94.89	95.09	95.25	95.52	0.27

# 2008 Revaluation



Effective Date January 1, 2008

Reduction in Appeals

Appeal Process January-May

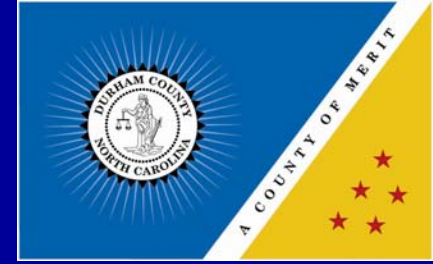
Bills Mailed in July



Photo Credit: 2000 - American Aerial Photos and

Durham Convention & Visitors Bureau

# 2007 Approved Bonds



Durham Public Schools	\$194,240,000
Durham Tech	\$ 8,680,000
Museum of Life & Science	<u>\$ 4,180,000</u>
Total	\$207,100,000

# Adopted CIP 2008-2017



**37 CIP Projects total**

**\$1.2 Billion**

## Major Projects

New County Courthouse

\$110 Million

Human Services Complex

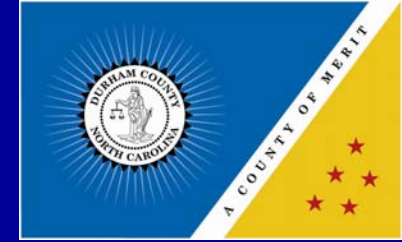
\$ 103 Million

Durham Public Schools

\$ 590 Million



# Capital Improvements



## North Durham Library



# Capital Improvements



**EMS Station Number 2**



# Capital Improvements



**Museum of Life and  
Science  
“Catch the Wind”**

# Capital Improvements



**Oakleigh**



# Alternative Revenues



# 2007 Economic Development Success



BlueCross BlueShield  
of North Carolina



Life sciences cluster expansions



# 2007 Economic Development Success



Southern Research Institute introduces its  
Carbon To Liquids Development Center in Durham

# Environmental Stewardship



City of Durham &  
Durham County

## GREENHOUSE GAS AND CRITERIA AIR POLLUTANT EMISSIONS INVENTORY AND LOCAL ACTION PLAN FOR EMISSION REDUCTIONS

September 12, 2007

Submitted by:  
ICLEI Energy Services

City Hall, West Tower, 16<sup>th</sup> Floor  
100 Queen Street West  
Toronto, ON, M5H 2N2  
Phone: (416) 392-0238  
Fax: (416) 392-1478  
Email: [les@iclei.org](mailto:les@iclei.org)  
Web site: [www.iclei.org/canada](http://www.iclei.org/canada)



# Environmental Stewardship



## DURHAM COUNTY *Growing More Sustainable Every Day!*

**Sustainable Development:** *The concept of meeting the needs of the present while maintaining healthy, diverse and productive methodologies without compromising the ability of future generations to meet their needs, ensuring the long-term health and viability of the community and its ecosystems.*

This year, the Durham Board of County Commissioners, along with the Durham City Council, adopted a comprehensive plan to reduce greenhouse gases by 30% by the year 2030. We are in the process of hiring a Sustainability Manager to guide the implementation of this plan community-wide.

### WE PROUDLY SUPPORT:

- air quality improvements
- water resource protection and conservation
- green space preservation
- active conservation of our natural resources
- environmental stewardship through preservation of open spaces, wetlands, wildlife habitats, and farmland
- economic development and job creation through new technologies

*The Board of County Commissioners recognizes the project team for attaining Leadership in Energy and Environmental Design on these recently completed projects!*

Glen Whisler, PE., County Engineer,  
Engineering Department  
Peri Manns, Assoc. ASLA, Interim Sr. Project  
Manager, Engineering Department  
Skip Auld, Director of Library Services  
Zena Howard, The Freelon Group P.A., Architects

*Some of our recent accomplishments include:*



**LEED Certification Achieved,**  
*East Regional Library: February 1, 2007*



**LEED "Silver" Certification Achieved,**  
*North Regional Library: June 22, 2007*



**TRIANGLE WASTEWATER PLANT:**  
*Performance Gold Award, October 22, 2007*  
*Received from the National Association of*  
*Clean Water Agencies in recognition of 100%*  
*Compliance with National Pollutant Discharge*  
*Elimination System for calendar year 2006*



For more information, visit us online at [www.durhamcountync.gov](http://www.durhamcountync.gov)  
Durham County Public Information Office (919) 560-0000  
200 East Main Street Durham, NC 27701

**East Regional Library  
LEED Certified**

**North Regional Library  
LEED Silver Award**

**Triangle Wastewater Treatment Plant  
Gold Award**



# 2007 Farm Protection



\$927,108 for 918-acre Little Mountain Farm on the Flat River

Largest Grant Awarded in NC to date

Little Mountain Farm

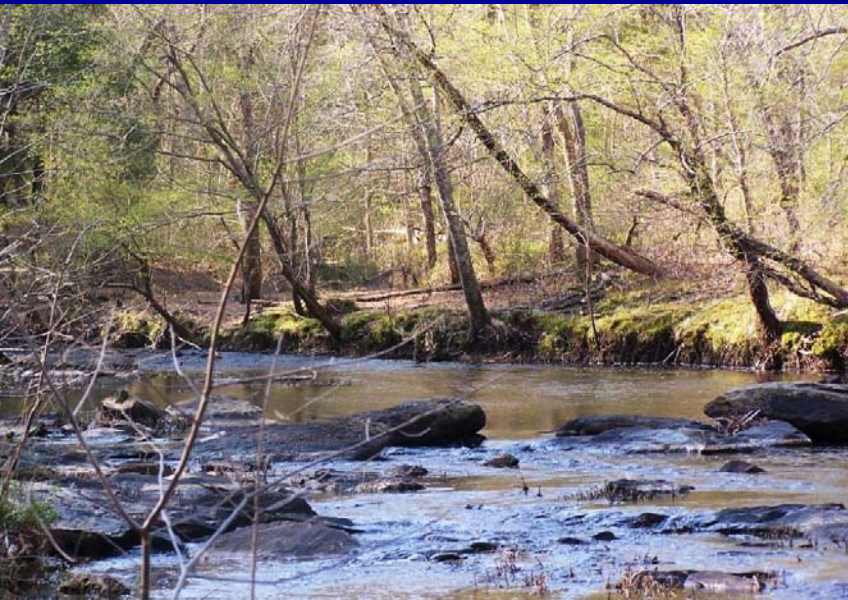




# Clean Water Grants



Three grants from NC Clean Water Management Trust Fund — \$2,038,000  
Two grants (\$1,504,000) will be used to preserve 293 acres along the Little River.  
The remaining grant (\$538,000) will be used for the Little Mountain Farm project.



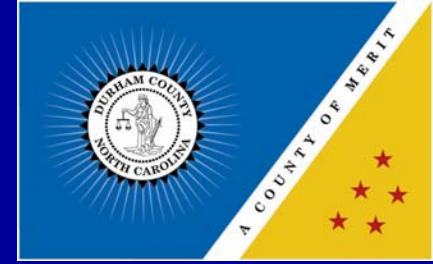
**Property along Little River**

# Drought Response



Lake Michie Oct. 2007

# CALEA Award



**Office of the Sheriff named  
2007 “Flagship Agency”  
by Commission of  
Accreditation of Law  
Enforcement Agencies**

# Gang Assessment



Employ 3 tier strategy:

suppression

intervention

prevention

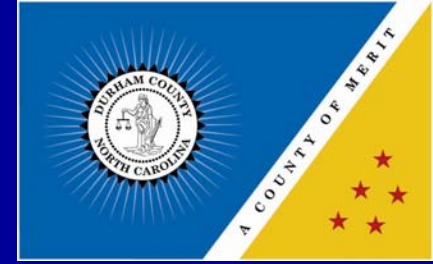
Hire project coordinator

Implement recommendations



# Code Red System

CodeRED® Emergency Telephone Calling System



Mass Emergency Notifications to 60,000 telephones hourly

Listed numbers

Unlisted numbers

Cell phones

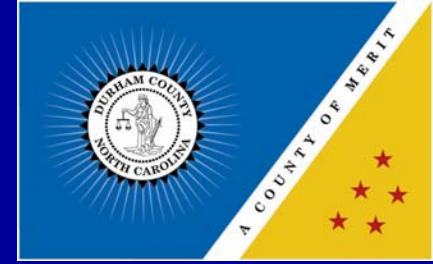
V.O.I.P. phones

Sign up at

[www.durhamcountync.gov/departments/emgt/CodeRED/CodeRED.html](http://www.durhamcountync.gov/departments/emgt/CodeRED/CodeRED.html)



# Results Based Accountability



1. Safety
2. Prosperous economy
3. Healthy environment
4. Vibrant community
5. Education
6. Housing
7. Health
8. Sustainable neighborhoods

# Project Access



## Increasing access to healthcare for the uninsured

Approximately 40,000 (18%) uninsured residents in Durham

Public/private partnership to increase access

Enroll uninsured patients at Lincoln Community Health Center

Goal of offering 2400 specialty referrals per year

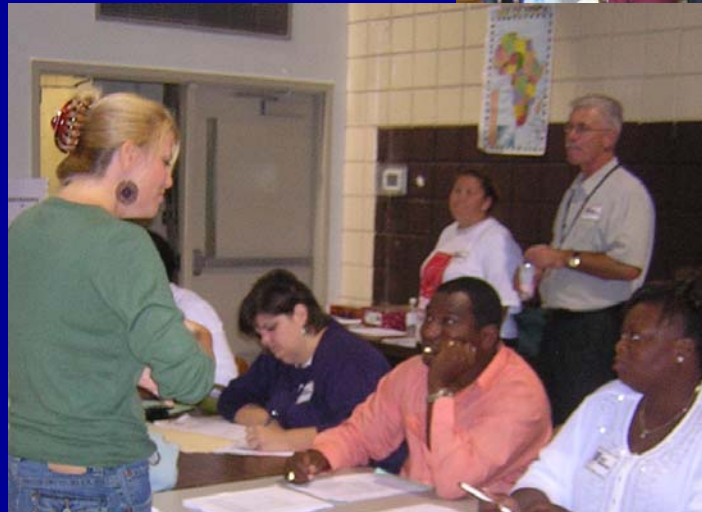


# Housing (RBA)



Ending homelessness

Starting Adult System of Care



Project Homeless Connect

10.25.2007

# 2008 Challenges

from Board Retreat

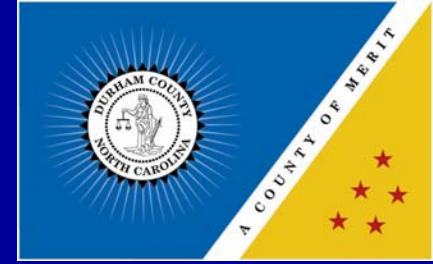


**1. Economic Empowerment**

**2. Reconnecting our Youth**

**3. Sustainability**

# Poverty Indicators



**Poverty rate is 15.6% (NC 14.7%).**

**20% of Durham County's children live in poverty.**

**Food stamp recipients have increased by 84% since 2001.**

**Medicaid recipients have increased by 100% since 1999.**

# Economic Empowerment



**Earned Income Tax Credit (EITC)**

**Enhance financial literacy**

**Expand literacy and GED instruction**

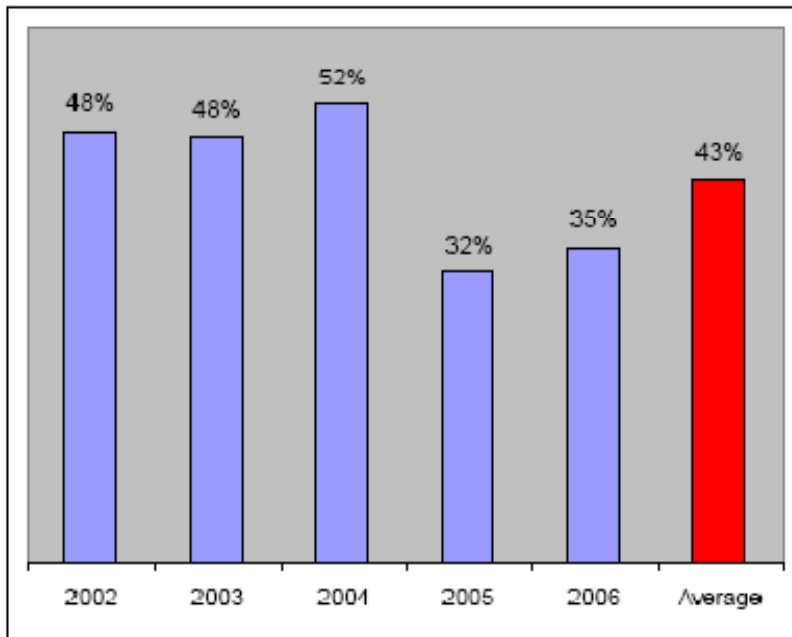
**Enhance workforce development**





# Reconnecting our Youth

Figure 16: Percent of Durham Homicides Classified as Gang-Related



Slayings hit youth hard in 2007

Half of homicide victims 25 or under

# Reconnecting our Youth



## Graduation Rates\*

	<u>Durham Public Schools</u>	<u>State</u>
2006-2007	66.3%	69.5%
2005-2006	68.8%	68.3%

\* High School Graduation rate for Ninth Graders four years later

# Reconnecting our Youth



Smart Start

Help for parents

Reading is fundamental

Tutoring and mentoring

After school programs

Truancy reduction

Alternative learning programs

Business partnerships and employment  
experience

Workforce preparedness

# Sustainability Measures



Sandy Creek Stream Restoration



Duke Professor Dr. Curtis Richardson and Eddie Culberson review project



# Sustainability Measures



Expedite wastewater reuse

Develop regional 50 year water plan

Request that the state update the rules regarding the use of gray water

Assess the carrying capacity for new developments based on water supply projections

Update stormwater ordinances to stress low impact design and reuse

Discourage mass grading and clear cutting

# Sustainability Measures



Encourage drought resistant landscaping

Seek legislation to update well rules

Set a target of Gold LEED certification for all new county facilities

Encourage green building by private developers

Adopt a new transit plan for the region

Develop a farm and forest preservation plan

# Conclusion



*“I call upon you not  
to be detached  
spectators  
but involved  
participants...”*

**Dr. Martin Luther King, Jr.**

