

**DURHAM COUNTY
NORTH CAROLINA**



Request for Qualifications

Public Art for Various Durham County Buildings RFQ No. 24-016

Issue Date: November 15, 2023
Deadline for Submissions: January 5, 2024

Proposal Schedule

(Note: The dates below are subject to change)

Public Art for Various Durham County Buildings (RFQ No. 24-016)

Advertisement Date	November 15, 2023	
Pre-submittal Site Visit	TBA	
Last Date for Questions	January 4, 2024	
Last Date for Submittals	January 5, 2024	



November 15, 2023

**Request for Submission of Qualifications for Public Art for
Various Durham County Buildings
(RFQ No. XX)**

Dear Artist:

You are invited to submit qualifications online via the submission portal on <https://callforentry.com> no later than **5:00 P.M.(EST)** on January 5, 2024. Submissions received after the date and time specified cannot be accepted. This RFQ is open to all residents of North Carolina.

Application materials must include the following:

Artist Statement: Briefly describe your experience, your discipline(s), and your qualifications for completing artworks. Artist teams should explain their interest and qualifications collectively.

Images: Submission should include visual representations of past artwork that demonstrate your qualifications for this project. Applicants must upload at least five (5) high-resolution images from at least three (3) different projects. Each project image should have an accompanying summary of the title, location, cost, materials/medium, and timeline associated with the piece. Videos will count as one of the five (5) images, and should be submitted as a hyperlink within the PDF. Artist teams' images should include examples from each team member.

Resume: Resumes for each artist/artist team member should include any public or private commissioning experience, and community engagement experience, if applicable.

References: Each artist should provide at least three (3) current references (non-familial) or recommendation letters with contact information for each reference, who can speak to the Candidates' work ethic, skills and strengths. Community references will be accepted. Artist teams may submit a total of three (3) references collectively.

All questions and requests for clarifications relative to this RFQ should be submitted in writing via email to Hilda Williams at hwilliams@dconc.gov by 3:00 P.M., on January 4, 2024. **All responses to questions will be posted online via Call for Entry.**

Sincerely,

Sarah Martin
Email: sarahmartin@dconc.gov



ANNOUNCEMENT

Request for Submission of Qualifications for Public Art at Various Durham County Buildings (RFQ No. 24-016)

The County of Durham, North Carolina, invites artists or artist teams to submit Qualifications for the design and installation of public artwork in, on, or around several Durham County Buildings. This is a call for multiple projects at various locations, multiple artists and artist teams will be commissioned.

Project Goals

Create artwork that will artistically promote the specified location as a vibrant, modern environment and vital component of the downtown culture and surrounding neighborhood. Commissioned artwork should be respectful of the values and mission of Durham County and its Public Art Program. The work should be culturally responsive and make visible strides to engage with and connect to the public by activating and enhancing the facility's grounds. Interested Candidates will seek to create an inviting civic statement that welcomes visitors, County employees, residents, and passersby.

Project Description

The County of Durham, North Carolina is seeking artists or artist teams ("Candidates") to design and install permanent public artworks in collaboration with County departments and other organizations engaged in capital development projects across Durham County, North Carolina. Multiple artists will be commissioned for various project locations which includes but is not limited to Durham County Administration Building 1, New 300 E. Main Street Parking Deck, New 500 East Main Street Parking Deck, and the New Durham County Youth Home (see appendix for images and details).

The East Main Street area has long been under-served, and the two (2) parking deck/mixed use projects are the beginning of a concerted effort to create a distinct neighborhood just east of the downtown core, and to connect Main Street from East to West through downtown. This area is being planned to incorporate mixed uses, incomes and modes of transportation, and these parking garages are the first step. Public art will be commissioned for the inside of both decks.

Timeline

Project timelines vary per location with some projects being commissioned immediately. Artist selections will begin in early 2024.

Definition

Durham County defines Public Art as original visual art including, but not limited to, sculptures, murals, photographic renderings, mosaics, lighting, and electronic art installations installed on a permanent basis in spaces which are visible from public streets and pedestrian walkways, free of any admission fee, through a public process providing opportunity for community input.

Project Background

Artists and Artist teams will be selected from this collection of RFQ respondents when a project's requirements render it suitable. Selection will be based on the appropriateness of the artist's medium and experience relevant to specific project requirements.

Cultural Equity

The Durham County Public Art Program supports a full creative life for all, Durham County commits to championing public art policies and practices of cultural equity that empower a just, inclusive, equitable nation.

Cultural equity embodies the values, policies, and practices that ensure that all people - including but not limited to those who have been historically underrepresented based on race/ethnicity, age, disability, sexual orientation, gender, gender identity, socioeconomic status, geography, citizenship status, or religion - are represented in the development of arts policy; the support of artists; the nurturing of accessible, thriving venues for expression; and the fair distribution of programmatic, financial, and informational resources.

Durham's History

A booming County in North Carolina's thriving Research Triangle, Durham began in 1864 as a small rail depot village. Tobacco drove the early economic development of Durham; the distinctive voice of the Piedmont Blues music grew to entertain workers, and the largest black owned insurance company in the country opened its headquarters on Parrish Street in 1906. Drawing on this rich and diverse history, Durham has reimagined and repurposed its earlier tobacco and textile warehouses and prominent landmarks to create a vibrant downtown. Southern Living Magazine wrote: "With a reverence for life's everyday pleasures (we're talking coffee, beer, pizza, and pie here), a passionate mix of chefs, farmers, brewers, bakers, and baristas have quietly transformed Durham into one of the hottest food destinations in the South.

Part of what makes Bull City compelling is the confluence of old and new: Its foodie future is gradually wiping out its tobacco past, yet remnants of the town's first industry provide a backdrop for its current scene. Both the American Tobacco Historic District and Brightleaf Square, two mixed-use developments brimming with restaurants, bars, and live music venues, are housed in former tobacco warehouses that date back to the 1800s and 1900s." Four local Chef's recently became James Beard Foundation Award semi-finalists, and two national award-winning micro breweries and craft distilleries have located downtown. Since 2000, the County has experienced exponential growth with a total of \$1.3 billion in investments.

Submission Requirements

Application materials must be received via the submission portal on <https://callforentry.com>. Items required shall include the following:

Artist Statement: Briefly describe your experience, your discipline(s), and your qualifications for completing artworks. Artist teams should explain their interest and qualifications collectively.

Images: Submission should include visual representations of past artwork that demonstrate your qualifications for this project. Applicants must upload at least five (5) high-resolution images from at least three (3) different projects. Each project image should have an accompanying summary of the title, location, cost, materials/medium, and timeline associated with the piece. Artist teams' images should include examples from each team member.

Résumé: Résumé for each artist/artist team member should include any public or private commissioning experience, and community engagement experience, if applicable.

References: Each artist should provide three (3) professional references or recommendation letters with contact information for each reference. Community references will be accepted. Artist teams may submit a total of three (3) references collectively.

Minority Women Business Enterprise (MWBE): Proposers are required to make a good faith effort to include Minority and Women Business Enterprises (M/WBEs) as part of their management team. Describe the program (plan) that your company has developed to encourage participation by M/WBEs to meet or exceed the goals set by the County of Durham's M/WBE Program Ordinance. Include a copy of that plan in your response. Provide documentation of M/WBE participation that you have achieved over the past two years on both public and private construction projects. Outline specific efforts that your Company takes to notify M/WBE firms of opportunities for participation. Indicate the M/WBE participation goal that you expect to achieve on this project.

Durham County hereby establishes the following goals for the expenditure of funds with MWBE firms. Questions concerning M/WBE should be directed to **Rick Greene, Assistant Procurement Manager, at rgreene@dconc.gov; (919) 560-0059.**

Categories	Construction	Architect/ Engineer	Services	Goods	MWBE Availability % (Median Availability)
Black American	14.6	9.8	10.9	2.8	10.4%
Asian American	1.3	3.0	1.1	.43	1.3%
Hispanic American	4.2	1.8	1.1	.43	1.5%
American Indian	.65	.75	1.0	.5	.70%
White Female	13.8	11.0	9.5	7.1	10.3%
Overall MWBE Participation Goal =					25.0%

Project Manager and Contacts with Durham County

Questions about this RFQ Direct questions and concerns to:

Att: Sarah Martin, Public Art Coordinator (Primary Contact)

Email: sarahmartin@dconc.gov

Phone: 919-560-7949

Att: Brenda Hayes-Bright, Project Manager (Secondary Contact)

Email: bbright@dconc.gov

Phone: 919-560-7991

Selection Process and Evaluation Criteria

County staff will review applications for completeness and may reject incomplete applications. An Artist Selection Panel (ASP) which may include County staff, members of the Durham Public Art Committee, visual art/design professionals, and other community members, will evaluate application portfolios for inclusion in the list of Artists and Artist Teams to be considered for these projects. Interviews may be requested if needed. Priority will be given to Artists who live or work in Durham County.

Disclaimer

This RFQ does not obligate the County of Durham to pay any costs incurred in the preparation and submission of a response. Furthermore, the RFQ does not obligate the County of Durham to accept or contract for any expressed or implied services. The County of Durham reserves the right to reject any and all submittals. The County of Durham is committed to a program of equal employment opportunity regardless of race, color, creed, sex, age, nationality, or disability.

Site 1 - Location 1A: Durham County Administration Building 1

Location 1A - 200 East Main Street, ground floor, under main stairs, accessible by ramp

Dimensions - Approximately 36 x 7 feet

Surface Material - Painted plywood

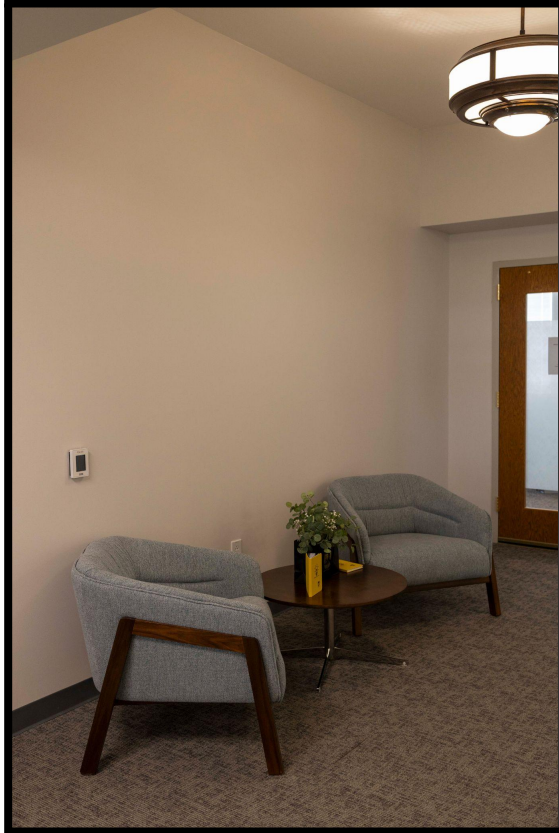


Site 1- Location 1B : Innovation Lab Lobby

Location 1B - 200 East Main Street, Second Floor

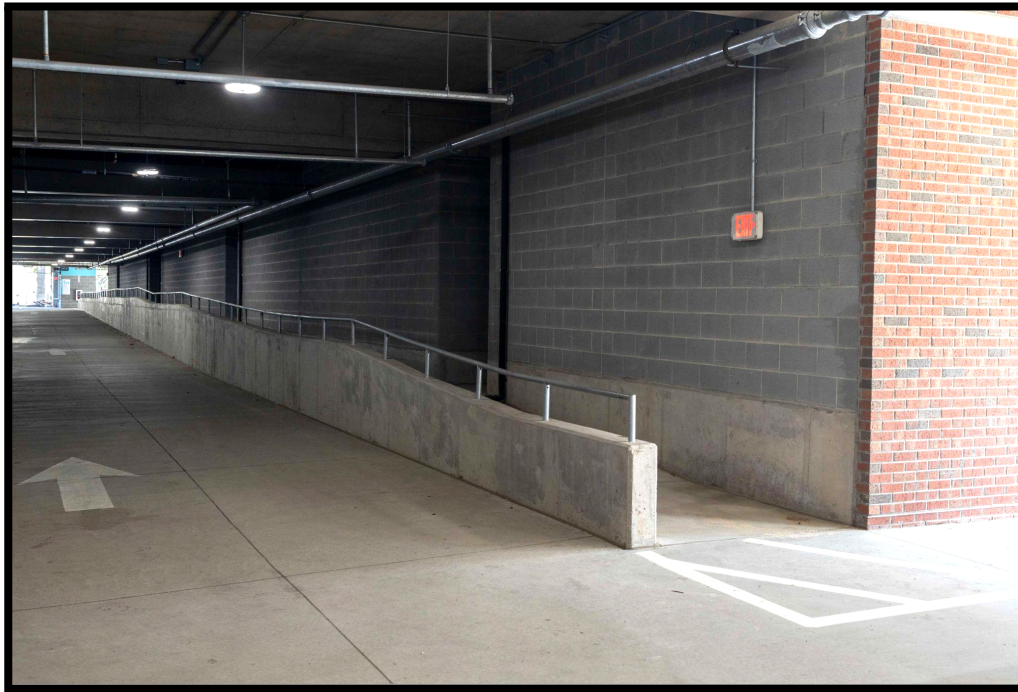
Dimensions: Approximately 12 x 6 feet

Surface Material: Painted Drywall





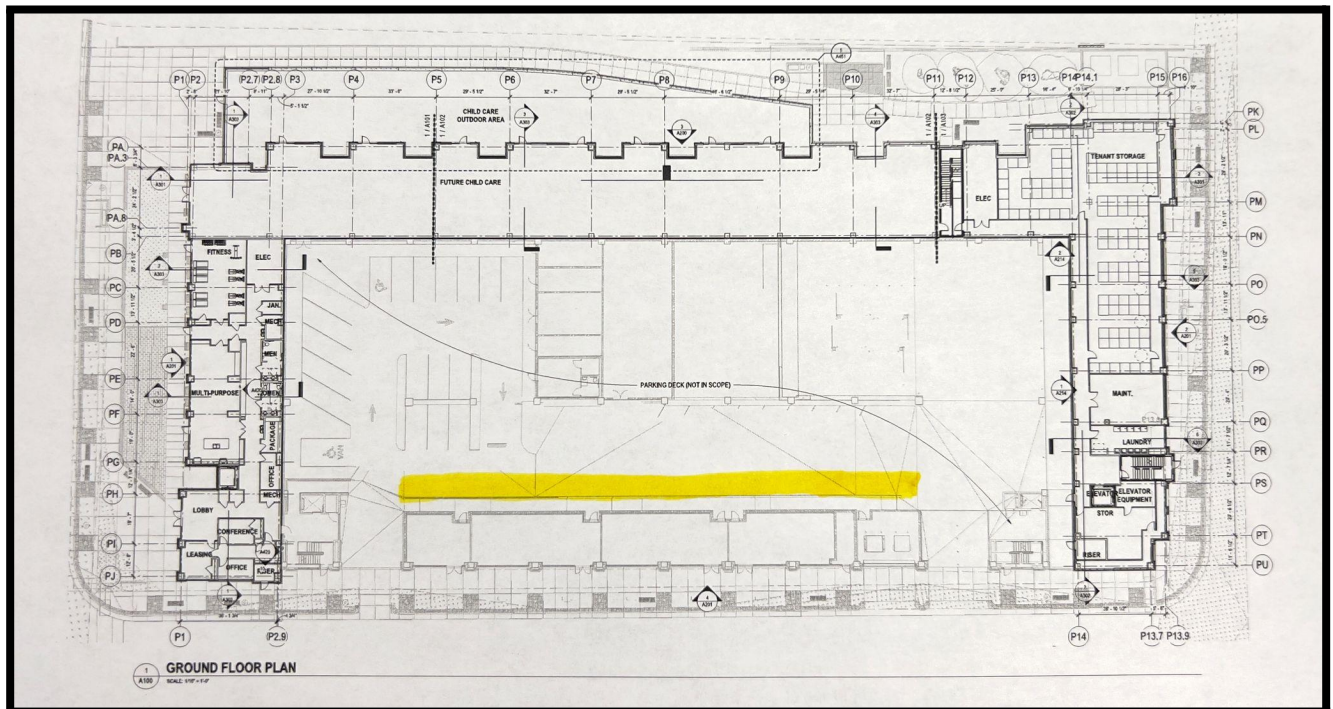
Site 2: - New 300 East Main Street Parking Deck



Site 2A - Location 2A: New 300 East Main Parking Deck

Location 2A - Ground floor behind commercial space

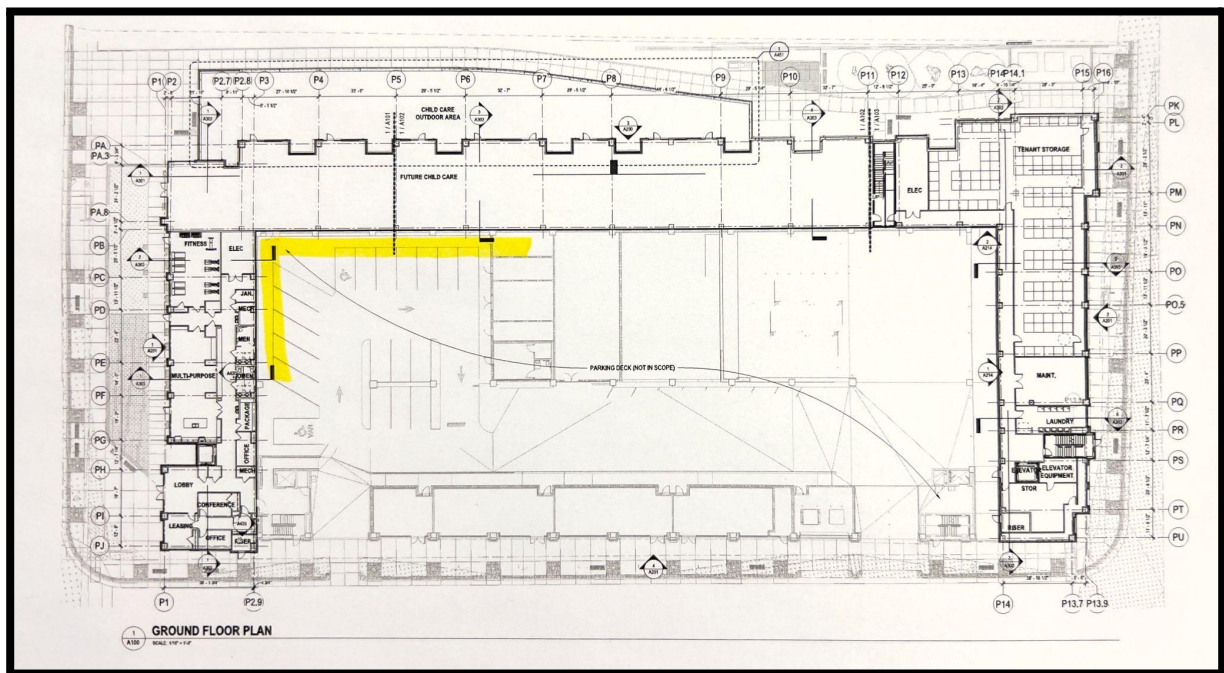
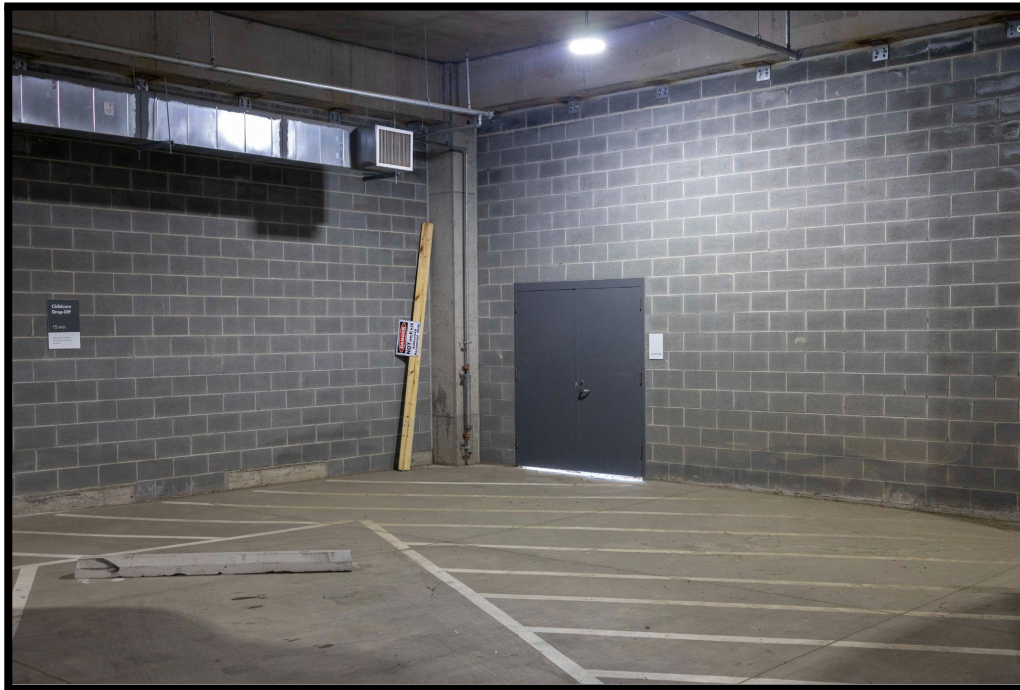
Dimensions: 120 x 10 feet



Site 2- Location 2B: New 300 East Main Parking Deck

Location 2B - Ground floor, entrance from parking lot to child care

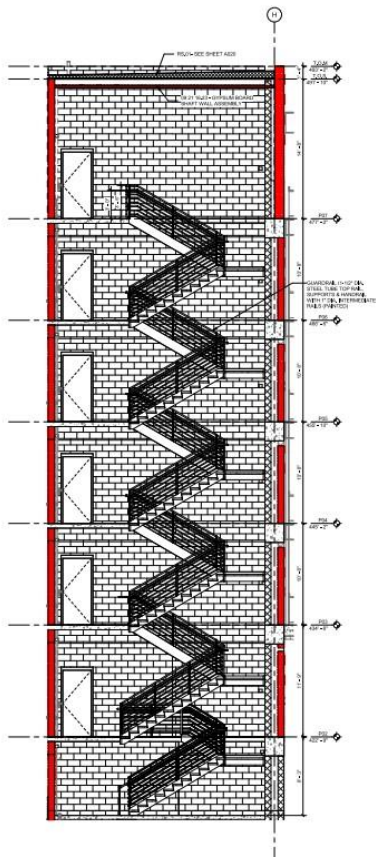
Dimensions: Flexible



Site 3: New 500 East Main Street Parking Deck



Location 3A: Interior Stairs, Parking Deck



Site 4: New Durham County Youth Home



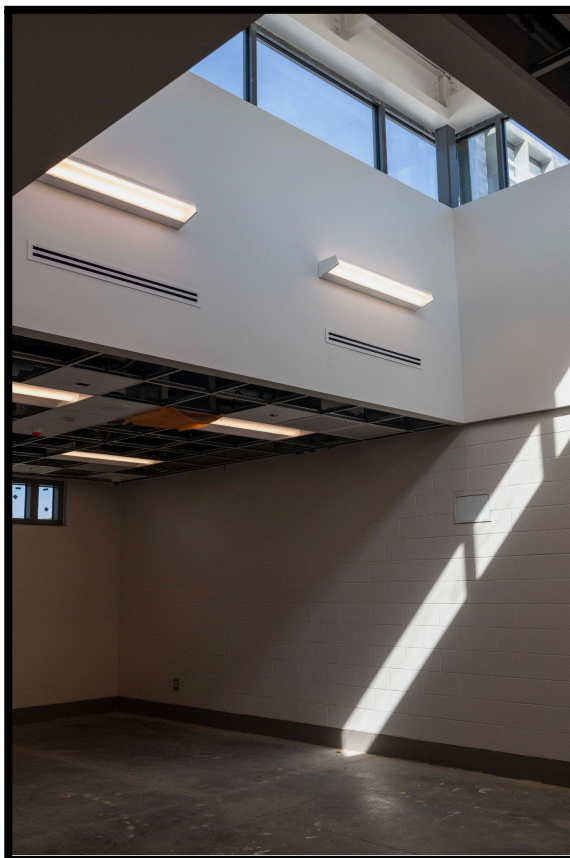
Location 4A - Lobby Wall

Dimensions: 25 x 17 feet





Location 4B - Classroom Interiors (1&2)



Location 4B - Skylight at front of classroom

