

DURHAM NEIGHBORHOOD COLLEGE 2023

Solid Waste Management

Jim Reingruber
Wayne Fenton



Solid Waste Management Mission & Vision

Our Mission is to “provide residents with exceptional customer service and outstanding waste collection, recycling, composting and disposal services.”

Our Vision is for “a circular economy that is an **equitable, innovative, cooperative** model that continually turns waste into resources by regionally **recirculating** materials for **reuse, recycling, and remanufacture.**”

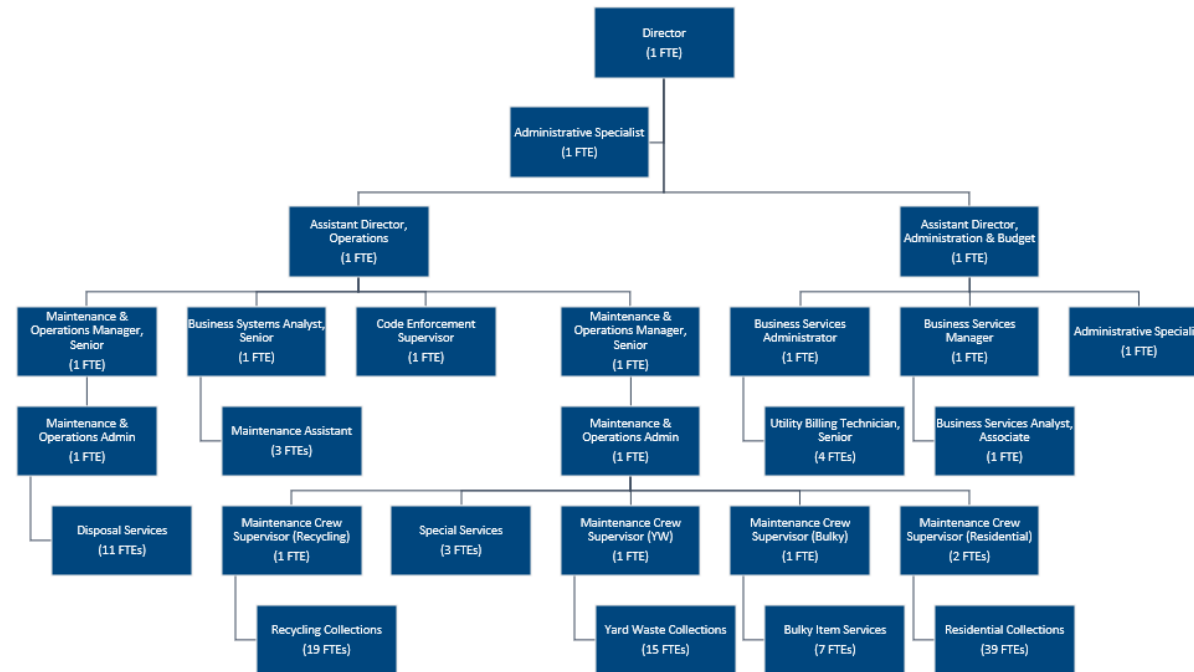


Solid Waste Management Organizational Chart & Structure



Solid Waste Department

(120 FTEs) *FTE = Full-time Employees



Solid Waste Management

Key Divisions, Programs & Initiatives

- **Waste Disposal & Recycling Center**
- **Collections**
- **Cart Services**
- **Code Enforcement**
- **Customer Service**



Solid Waste Management Key Divisions, Programs & Initiatives

Waste Disposal & Recycling Center

- ❑ Drop-off center accepts:
 - Hazardous Household Waste (HHW)
 - paint, pesticides, bulbs, paint, etc.
 - Textiles – clothing, shoes
 - Electronics (“E-Waste”)
 - computers, televisions, etc.
 - Appliances
 - Scrap metal
 - Clean wood (unpainted)
 - Scrap Tires



Solid Waste Management Key Divisions, Programs & Initiatives

Curbside Collection Services

- Household garbage/trash - weekly
- Recycling – bi-weekly
- Yard waste – weekly – subscription based
- Bulky items – by request/scheduling only
- Food scrap pilot program - weekly



Solid Waste Management Frequently Asked Questions

Collections

1. Where can I find my collection day?
2. How do I get my damaged cart fixed?
3. Is my item recyclable? How can I be a better recycler?
4. Why was my cart not collected on my collection day?
5. How do I sign up for yard waste service and what does it cost?
6. How do I dispose of large items that will not fit in my cart?



Never Miss Collection Day
with Durham's Rollout App

View your garbage and recycling
schedule, receive collection
notifications, and search the waste
database with our five-star app.

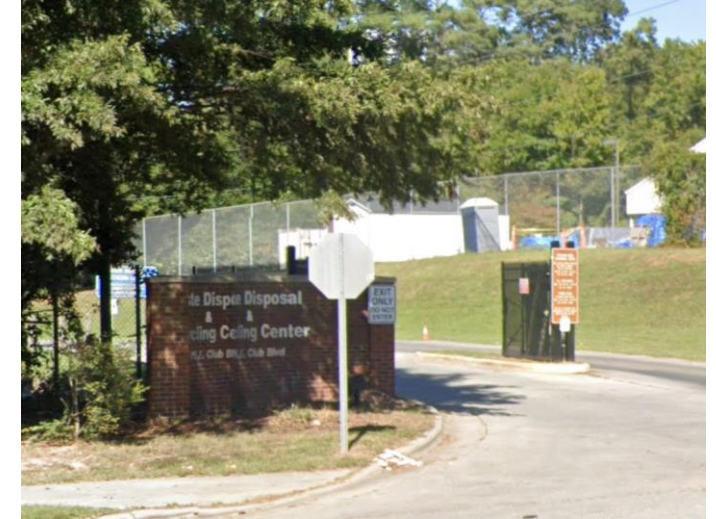
[Android](#) | [iPhone](#)



Solid Waste Management Frequently Asked Questions

Drop-Off Facility - Waste Disposal and Recycling Center (WD&RC)

1. Where is the WD&RC and when is it open?
2. What services are offered at the WD&RC?
3. What are the fees for using the WD&RC?
4. Can someone help me unload my items?



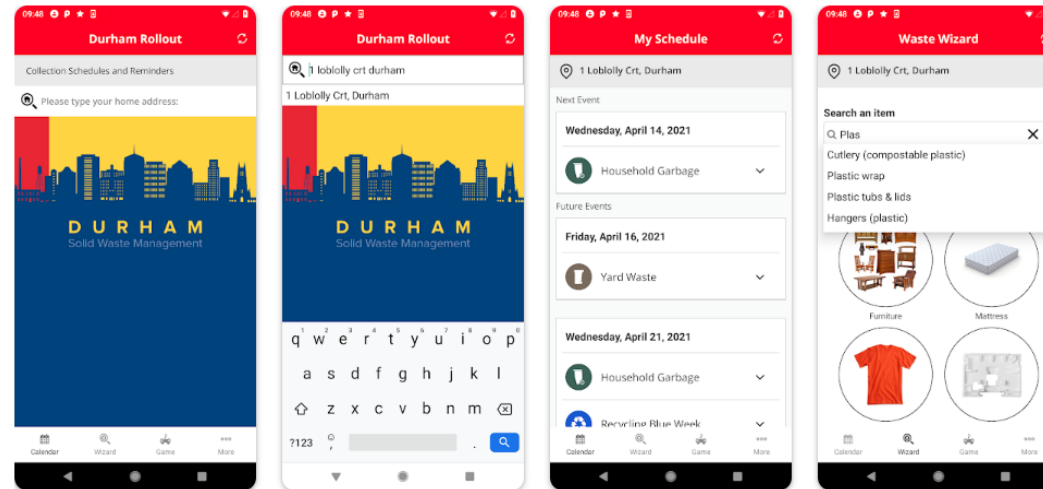
*Solid Waste Management Opportunities for Engagement

Keep up with Solid Waste Management by using the Durham Rollout app, and following the City's social media accounts

The Department is participating in a number of community/neighborhood events, school presentations, etc.

If you have questions, comments or suggestions, e-mail me at:

wayne.fenton@durhamnc.gov



Solid Waste Management Final Thoughts

We encourage all residents to remember and follow the preferred methods for managing waste:

REDUCE the amount you create

REUSE what you can by donating, selling, sharing, etc.

RECYCLE all that you can that is accepted in the City's or other programs or services

COMPOST your food scraps, if you are able



STAY CONNECTED

Solid Waste Management



<https://www.durhamnc.gov/832/Solid-Waste-Management>

Wayne Fenton

Acting Director

Wayne.Fenton@durhamnc.gov



Facebook: @cityofdurhamnc
X/Twitter: @CityofDurhamNC
Instagram: @cityofdurhamnc