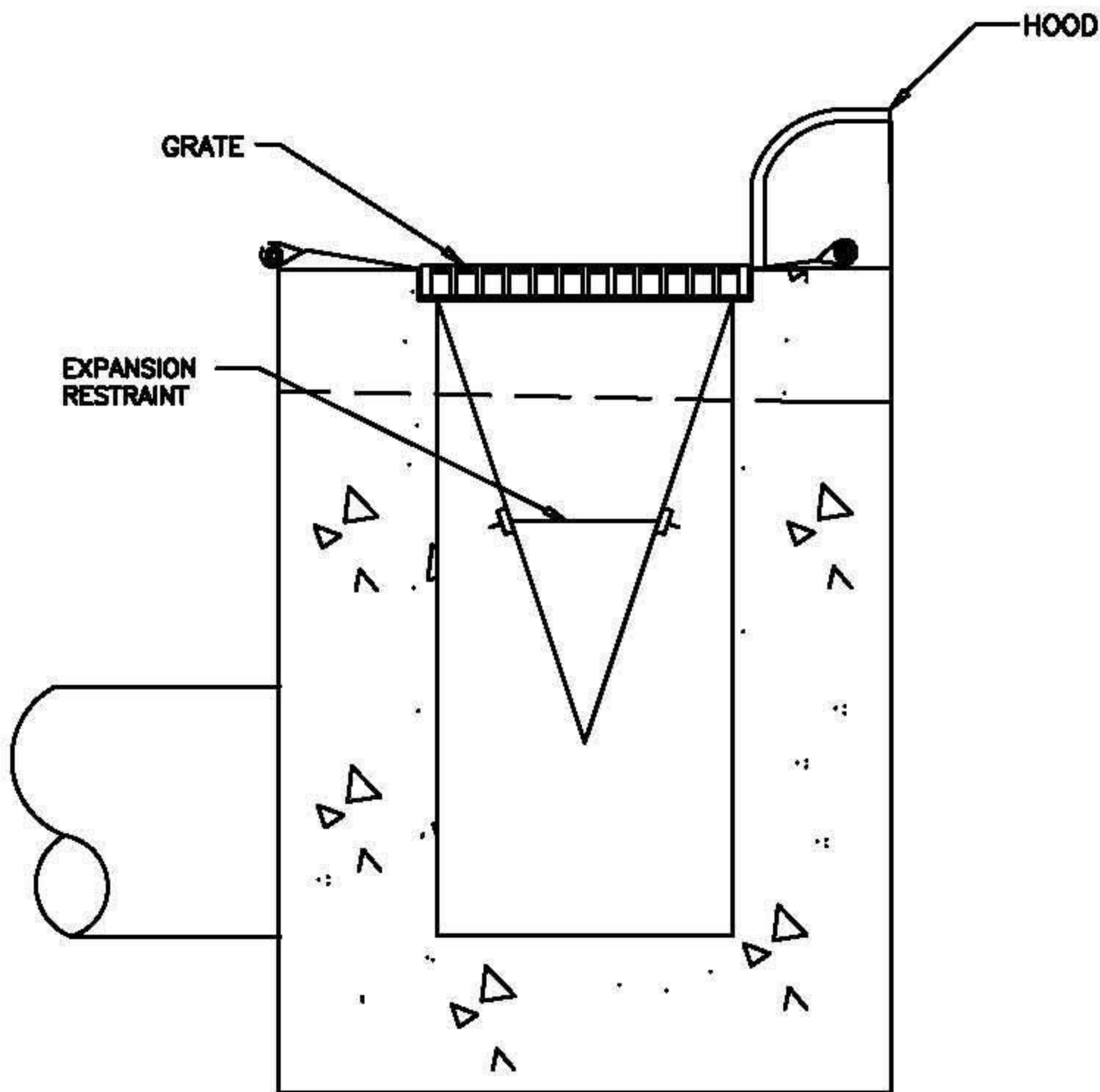
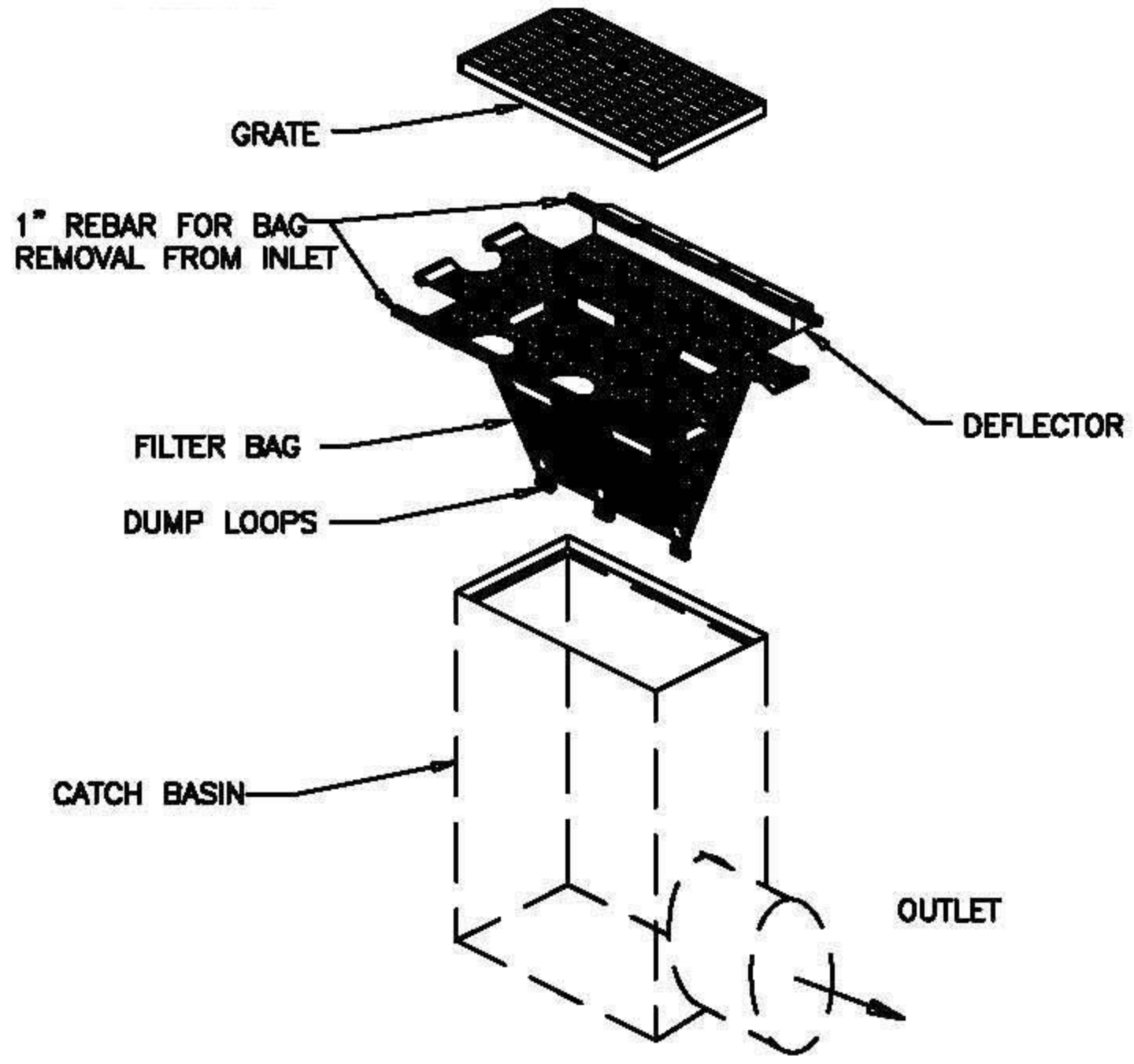


Maintenance: Inspect Inlet Protection and remove sediment after each rain event or as needed.



SECTION



INSTALLATION

NOT TO SCALE



EROSION CONTROL DETAIL
 DURHAM COUNTY, NC
 ENGINEERING DEPARTMENT

REV:

CATCH BASIN INLET PROTECTION

DATE	ID
02/09	DI - 2