



Durham County Community Linkages to Care

Peer Support Program



Anna Rickey

Peer Support Specialist (Full-time)
Durham Recovery Response Center



Henry Sweeney

Peer Support Specialist (Part-time)
Durham Recovery Response Center



Kim Chansen, M.Div

Peer Navigator Supervisor
Outpatient Program Supervisor
Durham Recovery Response Center



Definitions

Referral – any individual referred to the CLC peer support specialists (PSS). Includes phone calls, emails, and all attempted visits by the Post-Overdose Response Team (PORT)

Participant – any individual who talks with a PSS either in person, virtually, or over the phone. Most participants receive a resource folder and naloxone kit.

Enrollee – any participant who fills out a baseline clinical questionnaire and consents to enter the follow-up program at DRRC. This is done at a DRRC appointment. To receive treatment at DRRC, enrollees must be uninsured or have Durham Medicaid.

Naloxone Kit - any naloxone kit given to a participant by a PSS, or in the presence of one.

Participation - Through August 31, 2022

Referral Source	Referrals	Participants	Enrollees	Naloxone Kits
Durham County EMS / PORT	206	69	8	70
DRRC Crisis Facility	166	155	99	51
Durham County Detention Center	45	28	23	20
Duke University Hospital	32	22	11	8
Duke Regional Hospital	20	15	8	4
Other (includes self-referrals)	22	22	15	8
Total Overall	491	311	164	161

Enrollee Demographics – Through July 31

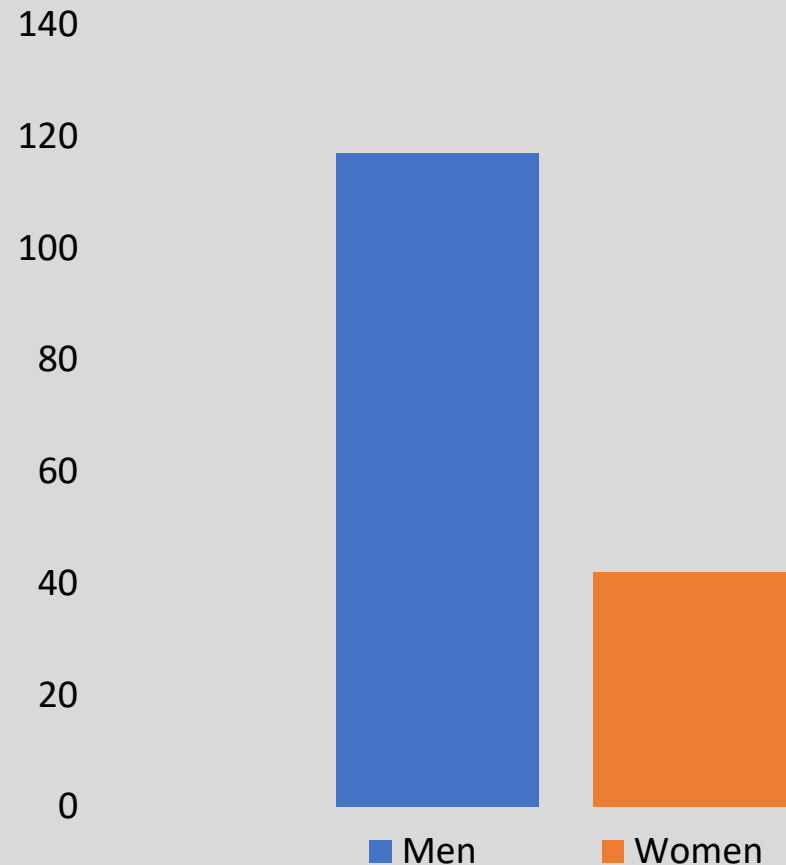
Age:

- Mean - 38
- Min - 21
- Max - 66

Gender:

- Men - 73.6%
- Women – 26.4%

Gender - Number of Enrollees



Enrollee Demographics – Through July 31

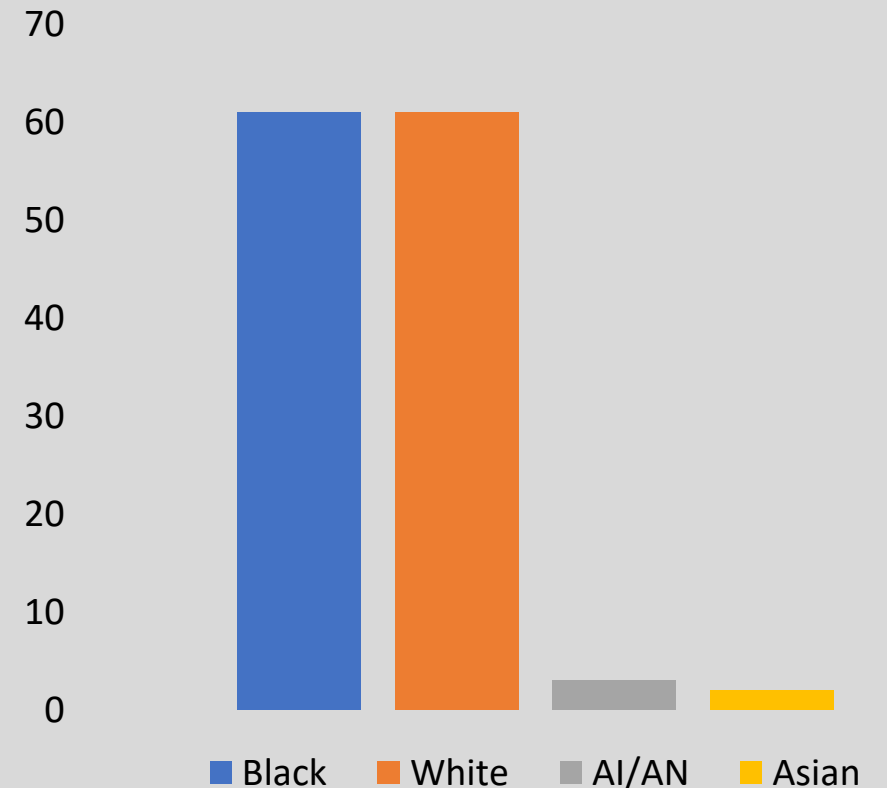
Race (excluding missing):

- Black – 48.0%
- White – 48.0%
- American Indian/Alaska Native – 2.4%
- Asian – 1.6%

Ethnicity (excluding missing):

- Hispanic/Latino – 5.4%

Race - Number of Enrollees



Enrollee Demographics – Through July 31

Housing:

- Total - 61.0%
- Women - 62.5%
- Men - 61.5%

Employment:

- Total - 19.5%
- Women - 14.6%
- Men – 21.4%

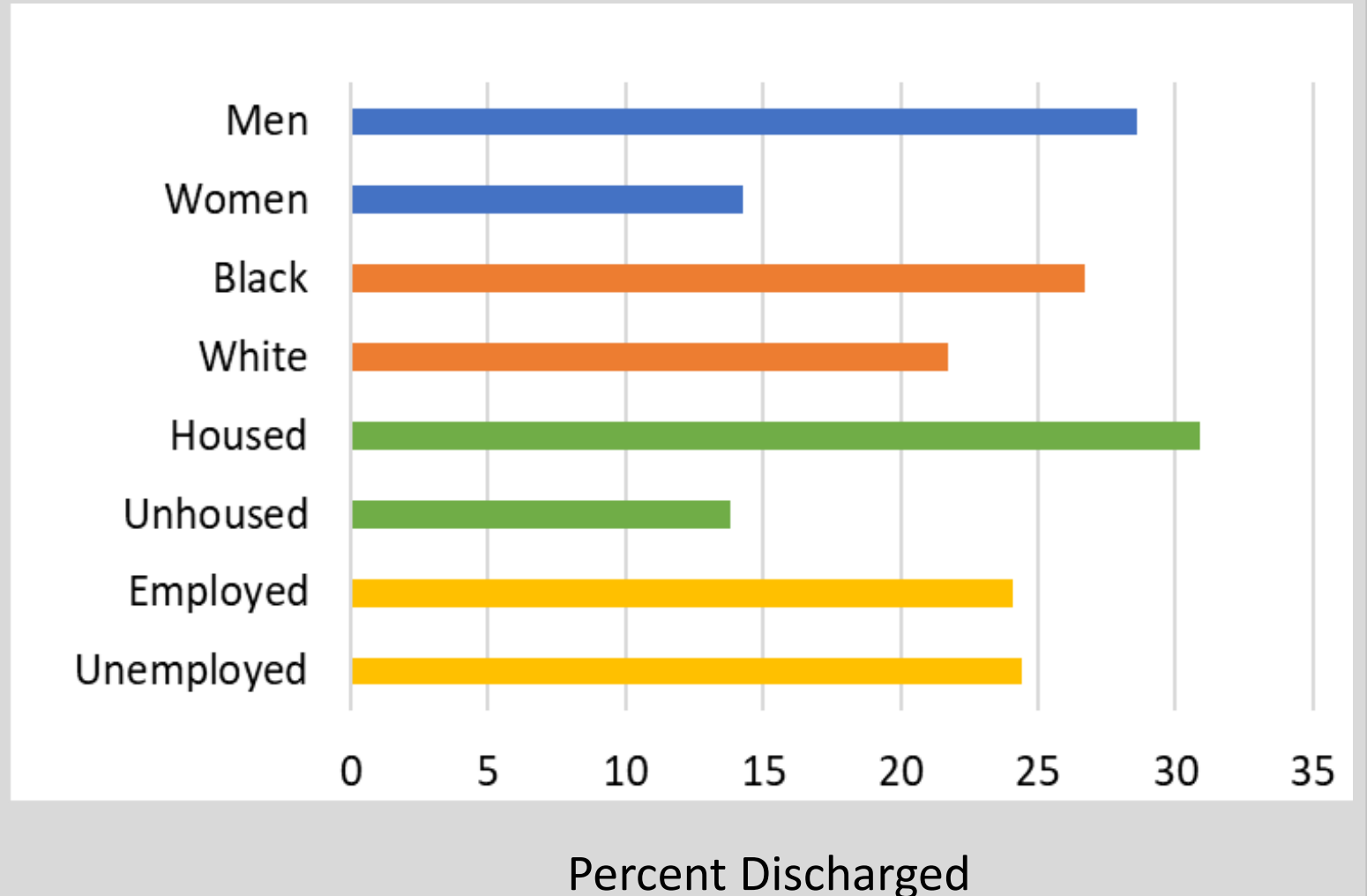
Do You Know What MAT Is?

- Yes – 59.1%
- No or Not Sure – 32.0%
- Missing or N/A – 8.8%

Want MAT: 87.4%

Enrollee Retention – 3 Months

- 116 enrollees stayed active for 3 months while 38 discharged before hitting the 3-month mark
- Overall retention rate = 75.3%
- Younger enrollees more likely to discharge than older. Mean age = 35 for discharged vs. 39 for not discharged



Linkage to Care and Outcomes – 3 Months

- 41 enrollees completed the 3-month clinical questionnaire
- 68.3% were not using opioids
- 63.4% were not using other substances
- 73.2% were taking MAT
- At baseline, 54% of the 41 enrollees had housing. By 3-months, 83% had housing.
- 3 people used naloxone kit provided (2 enrollees, 1 non-enrollee)
- Total of 275 Uber gift cards distributed

Enrollee Feedback – 3 Months

What was most helpful part of program?	
Peer support & Counseling	28
MAT/Medication	5
Transportation	5
Everything	2

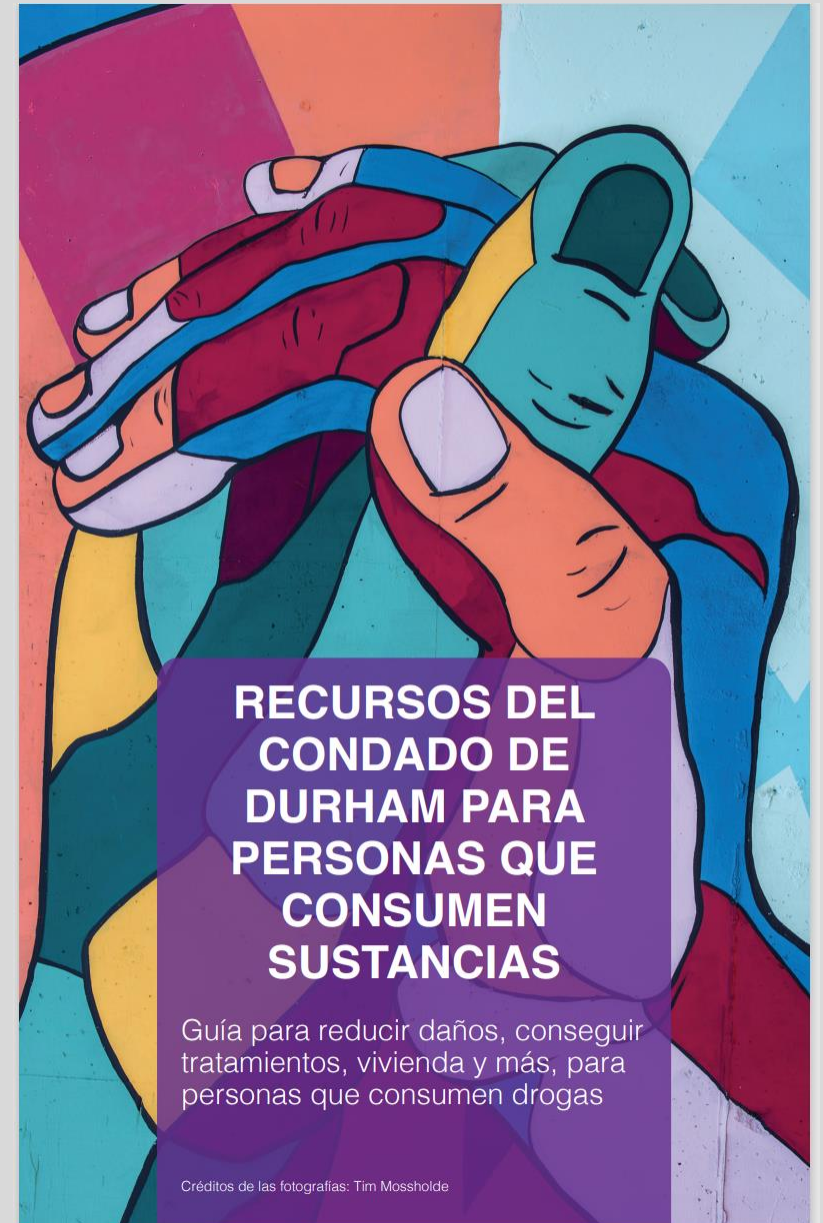
“I have been able to get sober based on the help of the peer support team. I can talk to them freely without judgement.”

“Having support from the peer navigator who checks on me often.”

“Being able to...talk to peers about things I can't talk to my family about”

Substance Use Resource Guide

- Translated to Spanish. Added resources specifically relevant for Spanish speaking individuals.
- Printed 900 Spanish hard copies and 1000 more English hard copies.
- PDF of both can be downloaded on DCoDPH website.
- Updating the English version in 2023.



Educational Trainings

- **Faith-Based Mini Conference**

April 28, 2022 - For Durham clergy and health ministry leaders. Partnered with the NC Council of Churches.

- **Supporting LGBTQ+ Health Training**

May 10 and 31, 2022 – For CLC staff, EMS Community Paramedics, and DCoDPH staff.

Communities of Faith Mobilizing to Prevent Overdose



Thursday, April 28, 2022

8:30am-12:00pm

An event to raise awareness of the pervasive substance use disorder/addiction and overdose problem we face and how faith leaders and communities of faith can use harm reduction strategies to assist individuals at risk.

This free, VIRTUAL event is intended for members of the clergy, faith leaders and health ministry leaders.

To register, click [here](#)



Upcoming Trainings

- **Trauma-Informed Care and Substance Use Training Series**

October 6, 13, and 20, 2022, 12:00 - 1:00 pm. For acute and primary care providers. Provides free CME credits.

- **Recovery-Friendly Workplace Webinar**

September 29, 2022, from 2:00-3:30 pm
For employers, supervisors, HR staff.
Partnering with Step Up Durham and ReCity Network.



Southern Regional
AHEC
Area Health
Education Center



Public Health

Trauma-Informed Care and Substance Use Training Series

October 6, 13, and 20, 2022 • 12 - 1 p.m. • Livestream

This program will have three sessions which occur every Thursday, starting October 6 through October 20, 2022.

Registration

Please register with the following link:

<https://www.southernregionalahec.org/courses-and-events/69446>

By using this link, you are registering for the entire Durham County Department of Public Health series. SR-AHEC will send a confirmation email with the webinar link before the start of each event. Please sign in to Zoom using your name and email associated with your MyAHEC account.

Target Audience

Physicians, advanced care practitioners, nurses, behavioral health professionals, and others interested are welcome to attend.

Description

Trauma-informed care improves patient outcomes, reduces costs, and improves patient satisfaction. Despite these benefits, many clinical providers have not received training or continued education in trauma-informed care. This webinar series is to provide primary and acute healthcare staff with an introduction to trauma-informed care, trauma-informed substance use treatment, and secondary trauma prevention. After the training, providers should be able to identify the principles of trauma-informed care, describe the need for trauma-informed substance use care, and the benefit of integrated care for substance use.

Series Trainer



Andrea Winkler, MSW, LCSW, LCAS is an engaging and informative practice-based trainer. Her passion for trauma and gender related issues began early in her academic experience at James Madison University, and continued throughout her MSW program at UNC Chapel Hill. Completion of UNC's Certificate in Substance Abuse Studies provided additional specialization in a population for whom trauma is a primary co-occurring feature. Andrea currently provides integrated clinical services through her private practice, after twelve years with outpatient psychiatry at Duke University Hospital. Andrea has developed training and consultation services that support the practical application of gender responsive substance use disorder treatment and trauma-informed care into medical, intellectual/developmental disabilities, mental health and substance use treatment fields, as well as for non-clinical audiences that interface with the public sector such as librarians and educators.

October 20, 2022 – Secondary Trauma Prevention and Intervention

Upon completion of this workshop, participants will be able to:

- List the factors that contribute to vulnerabilities for, and protections against, secondary trauma.
- Review the potential signs of secondary trauma.
- Describe the value of self-care.
- Discuss the potential for application of these concepts in participants' environment.

Speaker



Over the last 10 years, **Elizabeth Erickson, MD, FAAP** has focused her career on clinical care and the promotion of Early Relational Health in clinical spaces, with a focus on how literacy and reading with young children can promote healthy attachment and development. In her roles as a primary care pediatrician and full-term nursery attending, she has the opportunity to impact children starting at the very beginning of their lives. Evaluation and support of children's holistic development is a passion of hers and she has actively sought out opportunities to center this in her research, clinical care, community partnerships, and education of future physicians. She has served as the medical director for Duke's Reach Out and Read program for the last eight years and has had successful grant applications to support research on literacy interventions in the newborn period. As the inaugural Early Relational Health Fellow for Reach Out and Read, she has solidified a position at the center of national conversations on this topic. Finally, she was elected to serve as the co-lead for the Carolinas Collaborative, a cohort of academic pediatric residency programs in North and South Carolina dedicated to promoting advocacy education in pediatric residency programs.

Fee

Free to attend – Registration space is limited.

Credit

AMA PRA Category 1 Credit™ – 3.0

Funding

- CLC is funded through May 2023 – only 8 more months to go.
- FY21 - \$100,000
FY22 - \$110,000
FY23 - \$100,000
- Funding needed for data analyst to continue enrollee interviews and participant survey analysis



Thank You

For more information about the Durham County CLC Peer Support Program:

Lacie Scofield, MSPH
CLC Program Coordinator
LFScofield@dconc.gov

Kim Chansen, M.Div
Peer Navigator Supervisor
Kimberly.Chansen@riinternational.com

To reach a Peer Support Specialist, call:

919-695-3246 or 919-560-7305

Ask to speak with Durham Outpatient Peers.