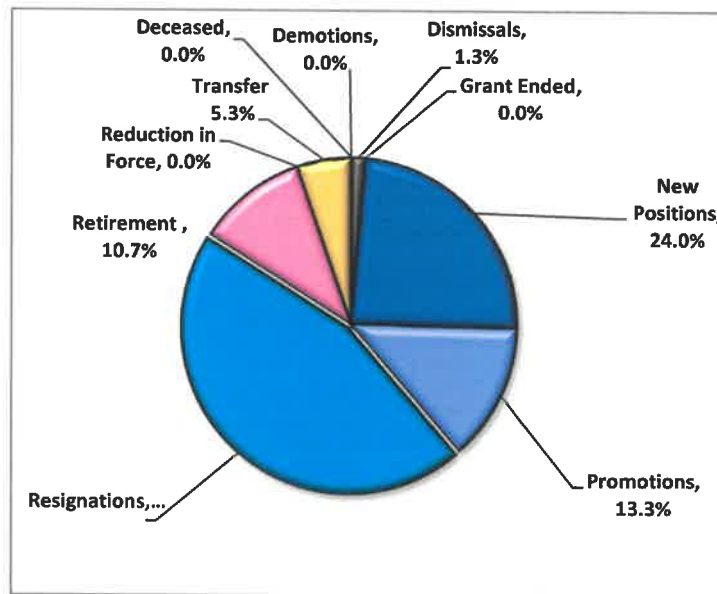


**PUBLIC HEALTH VACANCY REPORT**  
**July 1, 2021 through June 30, 2022**  
**Month Ending 6/30/2022**

<b>Vacancy Reasons</b>	<b>FY 19/20*</b>	<b>FY20/21**</b>	<b>FY21/22***</b>	<b>Total</b>	<b>%</b>
Deceased	0	0	0	0	0.0%
Demotions	0	0	0	0	0.0%
Dismissals	0	0	1	1	1.3%
Grant Ended	0	0	0	0	0.0%
New Positions	0	0	18	18	24.0%
Promotions	1	0	9	10	13.3%
Resignations	0	3	31	34	45.3%
Retirement	0	1	7	8	10.7%
Reduction in Force	0	0	0	0	0.0%
Transfer	0	0	4	4	5.3%
	<b>1</b>	<b>4</b>	<b>70</b>	<b>75</b>	<b>100%</b>



\*FY 19/20 - 1 positions remain vacant  
 \*\*FY 20/21 - 4 positions remain vacant  
 \*\*\* FY 21/22 vacant positions are cumulative  
 4 position(s) became vacant in Jun 21/22  
 41 position(s) were vacant out of 247.55 FTE positions for Jun, 2022

total # of vacancies for Jun            41  
 total # of positions                    247.55  
 % of vacancies                            16.6%

**VACANT POSITIONS in FY 2021/2022**  
**Month Ending 6/30/2022**

Cost Center	Position Title	Notes	Position Number	Vacancy Date	Start Date
Administration	Processing Assistant	VACANT	40000948	9/6/19	
CH/CMARC	Sr PH Nurse		40001099	10/31/19	7/12/21
CH/CMARC	Sr PH Nurse		40001103	10/31/19	8/23/21
Nutrition	Nutrition Specialist (48%)		40005369	7/23/20	7/26/21
CH/STI	PH Nurse		40009126	8/3/20	8/9/21
Nutrition	Processing Assistant		40008525	8/18/20	11/15/21
CH/School Health	Sr PH Nurse		40009020	8/24/20	7/12/21
CH/CMARC	Processing Assistant		40001066	8/25/20	8/9/21
CH/School Health	Sr PH Nurse		40001138	9/2/20	8/23/21
CH/School Health	Sr PH Nurse	VACANT	40007633	9/4/20	
Allied Health-Pharmacy	Pharmacist		40007450	9/23/20	2/7/22
Administration	Medical Director		40009775	9/28/20	11/1/21
CH/School Health	Sr PH Nurse	VACANT	40007628	10/13/20	
CH/School Health	Sr PH Nurse		40007630	10/23/20	1/24/22
CH/STI	CD Control Spec I		40001059	11/1/20	6/27/22
CH/School Health	Sr PH Nurse	VACANT	40001140	11/13/20	
Laboratory	Sr Processing Assistant		40005075	11/29/20	7/26/21
Health Education	PH Education Spec		40007988	12/14/20	10/4/21
CH/School Health	Sr PH Nurse		40001135	1/11/21	7/26/21
CH/Triple P	Human Services Coord III		40009500	1/11/21	10/4/21
CH/CMARC	Sr PH Nurse	VACANT	40001104	1/22/21	
Population Health	Accred Strateg Prog Mgr		40001083	2/19/21	10/4/21
CH/Maternal Health	Sr PH Nurse		40001082	2/22/21	7/12/21
CH/School Health	Sr Public Health Nurse		40007629	3/9/21	1/10/22
CH/School Health	PH Nurse Supervisor		40009021	4/30/21	11/1/21
Administration/Finance/Billing	Program Manager		40008982	5/10/21	11/1/21
Population Health	PH Epidemiologist		40006525	5/14/21	8/23/21
Nutrition	Nutrition Specialist		40005376	5/17/21	8/23/21
CH/OBCM	Social Work Supv II		40001077	5/28/21	8/23/21
Nutrition	Nutrition Specialist		40009112	6/25/21	10/4/21
Environmental Health	Environmental Health Spec		40008250	6/28/21	11/15/21
CH/School Health	Sr Public Health Nurse	VACANT	40009979	7/1/21	
CH/School Health	Sr Public Health Nurse	VACANT	40009997	7/1/21	
CH/School Health	Sr Public Health Nurse	VACANT	40009998	7/1/21	
CH/School Health	Sr Public Health Nurse	VACANT	40009999	7/1/21	
CH/School Health	Sr Public Health Nurse	VACANT	40010000	7/1/21	
CH/School Health	Sr Public Health Nurse	VACANT	40010001	7/1/21	
CH/School Health	Sr Public Health Nurse	VACANT	40010002	7/1/21	
CH/School Health	Sr Public Health Nurse	VACANT	40010003	7/1/21	
CH/School Health	Sr Public Health Nurse		40009978	7/1/21	5/2/22

**VACANT POSITIONS in FY 2021/2022  
Month Ending 6/30/2022**

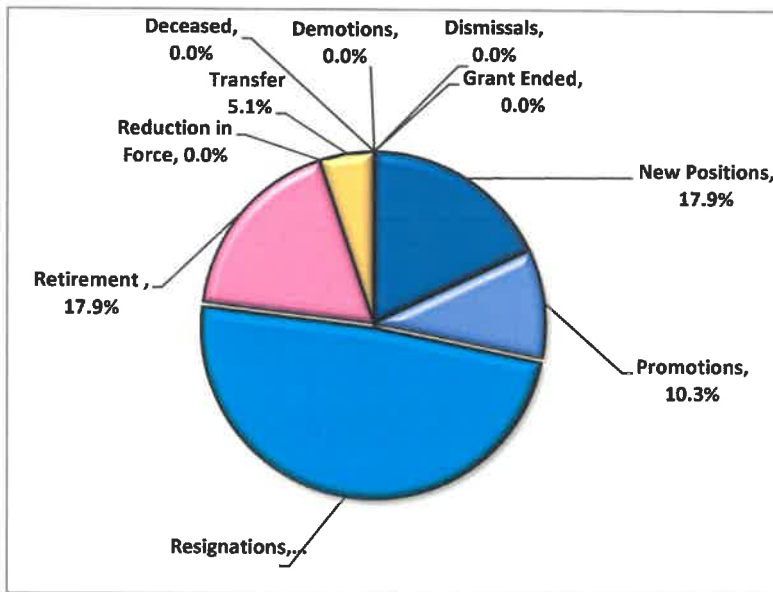
Cost Center	Position Title	Notes	Position Number	Vacancy Date	Start Date
CH/School Health	Sr Public Health Nurse		40009980	7/1/21	4/4/22
CH/School Health	PH Nurse Program Manager		40009995	7/1/21	10/4/21
CH/School Health	PH Nurse Supervisor		40009996	7/1/21	12/13/21
CH/TB	PH Nurse Supervisor		40001108	7/16/21	10/4/21
Laboratory/Pharmacy	PH Laboratory Administrator		40006200	7/23/21	2/7/22
Environmental Health	Environmental Health Spec		40001149	7/26/21	1/24/22
CH/Nursing Administration	Sr Processing Assistant		40001125	7/30/21	10/4/21
CH/School Health	Sr Public Health Nurse	VACANT	40007600	8/2/21	
Administration	Processing Assistant		40000947	8/6/21	9/20/21
Environmental Health	Environmental Health Spec		40007966	8/6/21	11/15/21
CH/Maternal Health	Community Health Assistant		40001093	9/20/21	1/10/22
Health Education	PH Education Spec	VACANT	40009176	9/24/21	
CH/School Health	Sr Public Health Nurse	VACANT	40001139	9/28/21	
Health Education	Office Assistant	VACANT	40010125	10/4/21	
Health Education	Public Health Edu Spec	VACANT	40010126	10/4/21	
Health Education	PH Prog Manager	VACANT	40010150	10/4/21	
Environmental Health	Processing Assistant		40001161	10/4/21	1/24/22
Nutrition	Nutrition Specialist		40005369	10/4/21	7/26/21
Nutrition	Nutrition Specialist		40008051	10/4/21	1/10/22
CH/CMARC	Processing Assistant		40001066	10/7/21	3/21/22
Environmental Health	Environmental Health Spec		40001164	10/19/21	1/24/22
Dental	Dental Assistant		40001019	10/21/21	4/18/22
Nutrition	Nutritionist	VACANT	40005373	10/22/21	
CH/School Health	Sr Public Health Nurse	VACANT	40007502	10/29/21	
Environmental Health	Environmental Health Spec	VACANT	40007625	10/29/21	
Nursing Admin	Public Health Nurse Spec		40007950	10/29/21	5/2/22
CH/STI	Public Health Nurse Supv		40007951	10/29/21	2/7/22
Laboratory	Medical Lab Supervisor		40001011	11/1/21	1/24/22
Administration	Privacy Contracts Officer		40007450	11/1/21	2/21/22
Environmental Health	Environmental Health Spec	VACANT	40001153	11/5/21	
Administration	Processing Assistant		40001030	11/5/21	2/7/22
Health Education	PH Education Spec (HIV Nav)		40009552	11/5/21	2/7/22
CH/School Health	Processing Assistant		40001068	12/10/21	3/21/22
CH/School Health	Sr Public Health Nurse	VACANT	40007626	12/13/21	
Health Education	PH Education Specialist		40002775	12/30/21	4/18/22
Nutrition	Community Health Worker	VACANT	40009104	1/10/22	
Dental	Processing Assistant		40001071	1/10/22	5/16/22
CH/School Health	Sr Public Health Nurse	VACANT	40009283	1/24/22	
Laboratory	Medical Lab Tech		40001009	1/24/22	5/2/22
Health Education	Public Health Edu Spec	VACANT	40001000	2/4/22	
Environmental Health	Environmental Health Spec		40008250	2/10/22	5/16/22

**VACANT POSITIONS in FY 2021/2022**  
**Month Ending 6/30/2022**

Cost Center	Position Title	Notes	Position Number	Vacancy Date	Start Date
Health Education	Public Health Edu Prog Mgr		40000998	2/21/22	4/4/22
CH/Maternal Health	Public Health Nurse Supv		40001091	3/1/22	5/2/22
Environmental Health	Environmental Health Spec	VACANT	40001150	3/18/22	
Environmental Health	Environmental Health Spec	VACANT	40009383	3/18/22	
Laboratory	Medical Lab Supervisor		40001011	3/25/22	5/31/22
CH/School Health	Public Health Nurse Supv	VACANT	40001143	3/31/22	
Administration	Sr Accountant	VACANT	40000942	4/1/22	
CH/Triple P	Human Services Coord III	VACANT	40009500	4/4/22	
Health Education	Public Health Edu Spec	VACANT	40007965	4/18/22	
CH/STI	Public Health Nurse	VACANT	40001028	4/22/22	
CH/Maternal Health	Sr PH Nurse	VACANT	40001086	5/2/22	
CH/Maternal Health	Sr PH Nurse	VACANT	40001089	5/2/22	
CH/TB	Sr Public Health Nurse	VACANT	40001035	5/13/22	
Nutrition	Human Services Coord III	VACANT	40009101	6/1/22	
Environmental Health	Environmental Health Spec	VACANT	40001156	6/24/22	
CH/School Health	Sr Public Health Nurse	VACANT	40001137	6/30/22	
Health Education	PH Education Specialist	VACANT	40007988	6/30/22	

**PUBLIC HEALTH VACANCY REPORT**  
**July 1, 2022 through June 30, 2023**  
**Month Ending 7/31/2022**

<b>Vacancy Reasons</b>	<b>FY 20/21*</b>	<b>FY21/22**</b>	<b>FY22/23***</b>	<b>Total</b>	<b>%</b>
Deceased	0	0	0	0	0.0%
Demotions	0	0	0	0	0.0%
Dismissals	0	0	0	0	0.0%
Grant Ended	0	0	0	0	0.0%
New Positions	0	7	0	7	17.9%
Promotions	1	2	1	4	10.3%
Resignations	3	14	2	19	48.7%
Retirement	1	5	1	7	17.9%
Reduction in Force	0	0	0	0	0.0%
Transfer	0	1	1	2	5.1%
	<b>5</b>	<b>29</b>	<b>5</b>	<b>39</b>	<b>100%</b>



\*FY 20/21 - 5 positions remain vacant  
 \*\*FY 21/22 - 29 positions remain vacant  
 \*\*\* FY 22/23 vacant positions are cumulative  
 5 position(s) became vacant in Jul 22/23  
 39 position(s) were vacant out of 247.55 FTE positions for Jul, 2022

total # of vacancies for Jul            39  
 total # of positions                    241.55  
 % of vacancies                            16.1%

**VACANT POSITIONS in FY 2022/2023**  
**Month Ending 7/31/2022**

Cost Center	Position Title	Notes	Position Number	Vacancy Date	Start Date
Administration	Processing Assistant	VACANT	40000948	9/6/19	
MS/School Health	Sr PH Nurse	VACANT	40007633	9/4/20	
MS/School Health	Sr PH Nurse	VACANT	40007628	10/13/20	
MS/School Health	Sr PH Nurse	VACANT	40001140	11/13/20	
CH/CMARC	Sr PH Nurse	VACANT	40001104	1/22/21	
MS/School Health	Sr Public Health Nurse	VACANT	40009979	7/1/21	
MS/School Health	Sr Public Health Nurse	VACANT	40009997	7/1/21	
MS/School Health	Sr Public Health Nurse	VACANT	40009998	7/1/21	
MS/School Health	Sr Public Health Nurse	VACANT	40009999	7/1/21	
MS/School Health	Sr Public Health Nurse	VACANT	40010002	7/1/21	
MS/School Health	Sr Public Health Nurse	VACANT	40010003	7/1/21	
MS/School Health	Sr Public Health Nurse		40010000	7/1/21	7/25/22
MS/School Health	Sr Public Health Nurse		40010001	7/1/21	7/11/22
MS/School Health	Sr Public Health Nurse	VACANT	40007600	8/2/21	
Health Education	PH Education Spec		40009176	9/24/21	7/25/22
MS/School Health	Sr Public Health Nurse	VACANT	40001139	9/28/21	
Health Education	PH Prog Manager	VACANT	40010150	10/4/21	
Health Education	Office Assistant		40010125	10/4/21	7/11/22
Health Education	Public Health Edu Spec		40010126	10/4/21	7/25/22
Nutrition	Nutritionist	VACANT	40005373	10/22/21	
MS/School Health	Sr Public Health Nurse	VACANT	40007502	10/29/21	
Environmental Health	Environmental Health Spec	VACANT	40007625	10/29/21	
Environmental Health	Environmental Health Spec	VACANT	40001153	11/5/21	
MS/School Health	Sr Public Health Nurse	VACANT	40007626	12/13/21	
Nutrition	Community Health Worker	VACANT	40009104	1/10/22	
MS/School Health	Sr Public Health Nurse	VACANT	40009283	1/24/22	
Health Education	Public Health Edu Spec		40001000	2/4/22	7/11/22
Environmental Health	Environmental Health Spec	VACANT	40001150	3/18/22	
Environmental Health	Environmental Health Spec	VACANT	40009383	3/18/22	
MS/School Health	Public Health Nurse Supv	VACANT	40001143	3/31/22	
Administration	Sr Accountant	VACANT	40000942	4/1/22	
MS/Triple P	Human Services Coord III	VACANT	40009500	4/4/22	
Health Education	Public Health Edu Spec		40007965	4/18/22	7/11/22
MS/STI	Public Health Nurse	VACANT	40001028	4/22/22	
MS/Maternal Health	Sr PH Nurse	VACANT	40001086	5/2/22	
MS/Maternal Health	Sr PH Nurse	VACANT	40001089	5/2/22	
MS/TB	Sr Public Health Nurse		40001035	5/13/22	7/25/22
Nutrition	Human Services Coord III	VACANT	40009101	6/1/22	
MS/School Health	Sr PH Nurse	VACANT	40007629	6/10/22	
Environmental Health	Environmental Health Spec	VACANT	40001156	6/24/22	
MS/School Health	Sr Public Health Nurse	VACANT	40001137	6/30/22	

**VACANT POSITIONS in FY 2022/2023**  
**Month Ending 7/31/2022**

Cost Center	Position Title	Notes	Position Number	Vacancy Date	Start Date
Health Education	PH Education Specialist	VACANT	40007988	6/30/22	
Health Education	PH Education Educator	VACANT	40004350	7/11/22	
MS/Family Planning	Sr Public Health Nurse	VACANT	40008990	7/25/22	
Environmental Health	Environmental Health Spec	VACANT	40001165	7/27/22	
MS/School Health	Sr Public Health Nurse	VACANT	40007500	7/29/22	
CH/STI	Public Health Nurse	VACANT	40009126	7/29/22	