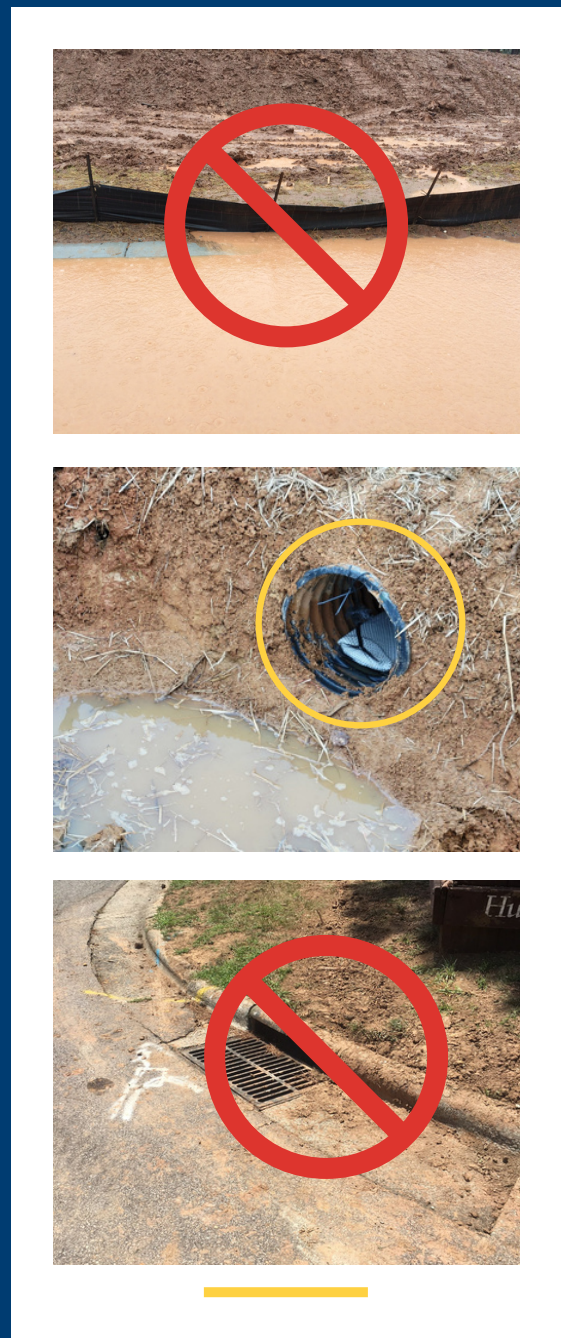


FLOCCULANTS

It is your responsibility to make sure nothing but rain flows into stormdrains from your construction site. A flocculant is a product you can add to your Erosion Control Measures that separates the sediment from the stormwater before it flows off the active site. Flocculants can be used with wattles, sand/gravel bags, dams, and ditch liners to make your erosion control measures more effective.



**Flocculant use
strengthens your
erosion control
measures**

To learn more about flocculants and other stormwater control measures, visit the City of Durham Pollution Prevention webpage.

durhamnc.gov/802



1. APPLY EVENLY

More isn't better! Apply flocculants in an area well before the edge of the construction property. Spread the flocculant evenly. Don't dump it in piles. Over application of a flocculant can create stormwater pollution itself.



2. FOLLOW INSTRUCTIONS

When using flocculants, it's important to follow the instructions on the manufacturer's packaging or consult with local professionals for best guidance. There are specific amounts and specific locations where flocculants will work more efficiently.



Engineering and
Environmental Services



PUBLIC WORKS
CITY OF DURHAM

3. CHOOSE THE RIGHT FORM

There are many kinds of flocculant, and depending on the construction site, one form might work better than another. Check with a local professional for guidance.

