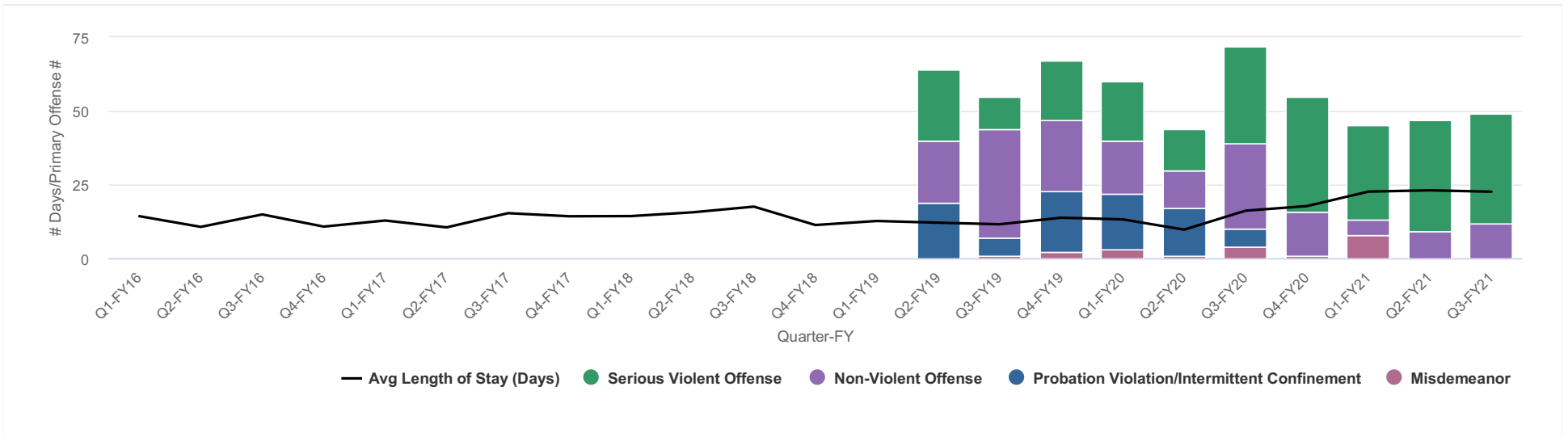


Youth Home: Primary Offense Committed & Avg. Length of Stay (Days)
 Youth Home

Youth Home Population: Primary Offense Committed & Avg. Length of Stay (Days)



Measure Data

Last Calculated 26 minutes ago

| Period | Status | Avg Length of Stay (Days) | Serious Violent Offense | Non-Violent Offense | Misdemeanor | Probation Violation/Intermittent Confinement | Undisciplines | Interstate Compact |
|---------|-------------|---------------------------|-------------------------|---------------------|-------------|--|---------------|--------------------|
| Q1-FY16 | Not Defined | 14.3 | | | | | | |
| Q2-FY16 | Not Defined | 10.6 | | | | | | |
| Q3-FY16 | Not Defined | 14.9 | | | | | | |
| Q4-FY16 | Not Defined | 10.7 | | | | | | |
| Q1-FY17 | Not Defined | 12.8 | | | | | | |
| Q2-FY17 | Not Defined | 10.5 | | | | | | |
| Q3-FY17 | Not Defined | 15.3 | | | | | | |
| Q4-FY17 | Not Defined | 14.2 | | | | | | |
| Q1-FY18 | Not Defined | 14.3 | | | | | | |
| Q2-FY18 | Not Defined | 15.6 | | | | | | |
| Q3-FY18 | Not Defined | 17.5 | | | | | | |
| Q4-FY18 | Not Defined | 11.3 | | | | | | |
| Q1-FY19 | Not Defined | 12.6 | | | | | | |
| Q2-FY19 | Not Defined | 12.1 | 24 | 21 | 0 | 19 | 0 | 0 |
| Q3-FY19 | Not Defined | 11.5 | 11 | 37 | 1 | 6 | 1 | 1 |
| Q4-FY19 | Not Defined | 13.7 | 20 | 24 | 2 | 21 | 0 | 1 |
| Q1-FY20 | Not Defined | 13.2 | 20 | 18 | 3 | 19 | 0 | 0 |
| Q2-FY20 | Not Defined | 9.7 | 14 | 13 | 1 | 16 | 0 | 0 |
| Q3-FY20 | Not Defined | 16.1 | 33 | 29 | 4 | 6 | 1 | 0 |
| Q4-FY20 | Not Defined | 17.7 | 39 | 15 | 1 | 0 | 0 | 0 |
| Q1-FY21 | Not Defined | 22.6 | 32 | 5 | 8 | 0 | 0 | 0 |
| Q2-FY21 | Not Defined | 23.0 | 38 | 9 | 0 | 0 | 0 | 0 |
| Q3-FY21 | Not Defined | 22.6 | 37 | 12 | 0 | 0 | 0 | 0 |
| Q4-FY21 | Not Defined | | | | | | | |

What is being measured and why does it matter? Highlight alignment with the strategic plan where appropriate.

The Youth Home population measure captures the average length of stay in days and the primary offense(s) committed by the juveniles who are court ordered to the detention facility. It is important to include the offenses committed with the average length of stay in days, to show how more serious offenses may affect how long the juvenile is court ordered to remain in detention.

What explains how this measure is trending?

Q3-FY21

The average length of stay for Q3 is trending at 22.6 about the same as Q1 and Q2. The Youth Home has no authority in the court's decision to place and juvenile in detention or how long they are court ordered to remain in detention. However, our data indicates juveniles are being detained for very serious violent offenses such as murder and armed robbery. These offenses are usually transferred from juvenile to superior/adult court which takes longer for trial, pleas or other disposition of cases. The type of primary

offenses for Q3 are trending about the same as previous quarters with approximately 75% of detaining offenses being for serious violent offenses such as murder, armed robbery, and rape.

What steps can be taken to improve how this measure is trending (or improve upon current success)?

Q3-FY21

The Youth Home has no authority in the court's decision to place a juvenile in detention or how long the juvenile remains in detention. The Youth Home works closely with Durham and surrounding counties as well as the state detention administrators to provide bed space when available and when needed. Violent serious offenses such as murder and armed robbery are usually transferred to adult court which results in longer detention stays due to longer court processes.

Why is the target for this measure set at this level?

This is a newly combined measure and a target has not been established. However, based on FY18 data the average length of stay for FY18 was 14.66 days and FY19 data trends at an average of 12. Using this data to establish trends, a target for this newly combined measure has been established at 12 days. The number of juveniles detained for FY20 Q2 for offenses noted were all down as well.

1) How is this measure collected and 2) What are all of the steps involved for collecting this measure?

Data is collected from monthly detention reports. Reports are generated from the Youth Home system as well as from the state (NCJoin) system.


1) What is the data source and 2) If collected from an external source (like a survey or the census), please provide the link.

The data source are monthly reports from the Youth Home intake system as well as NCJoin (state) juvenile records system.

Measure Audience

- Dashboard

Owner

 Sheila Bowens-Bratts (Youth Home)