



Board of Health Smoking Rule Sign Installation Update

Natalie Rich, MPH
Tobacco Health Education Specialist



Timeline

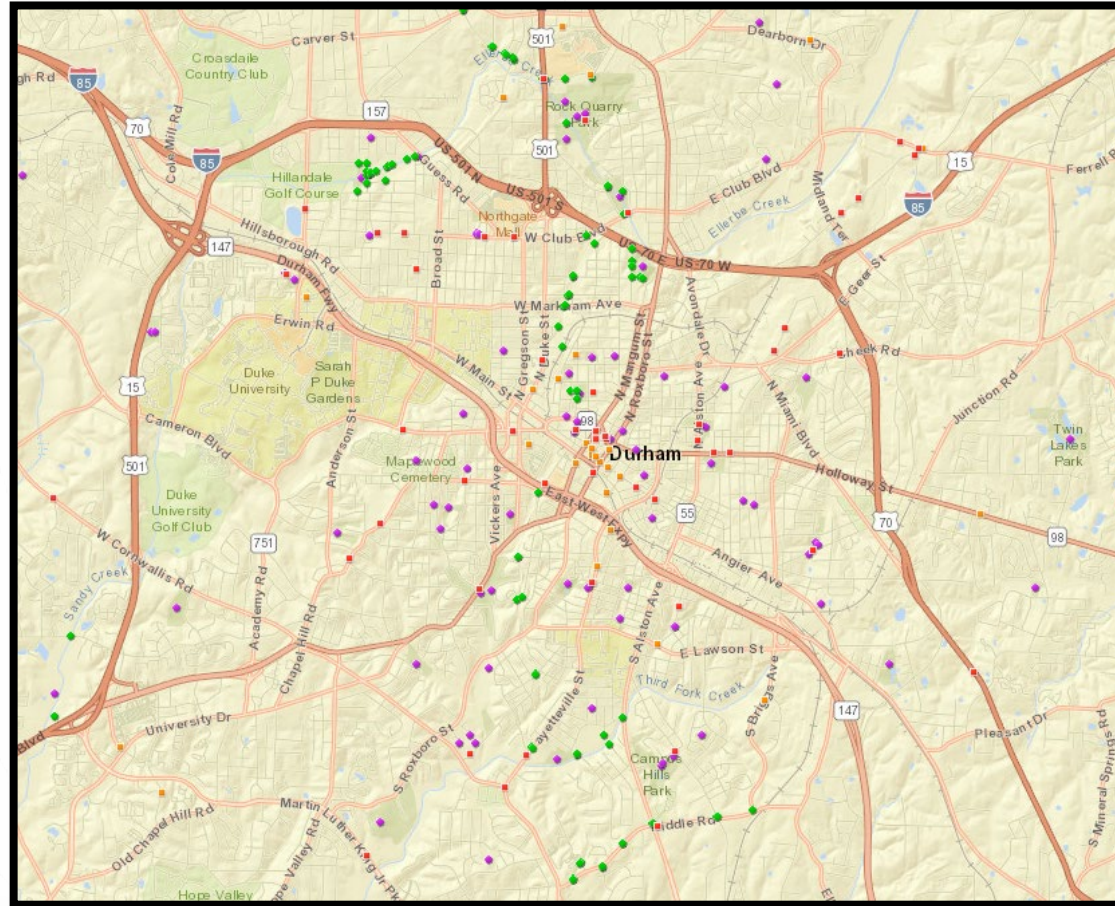
Aug. 2012	Jan. 2016	Oct. 2017	Jun. 2018	Aug 2018
Rule passed	E-cigs added	“Sidewalk” expanded	Contractor hired	Phase I complete



Sign Installation: Phase I

368 signs

- City-owned facilities
- County-owned facilities
- Trail heads
- Parks and Rec sites






Sign Installation: Phase I

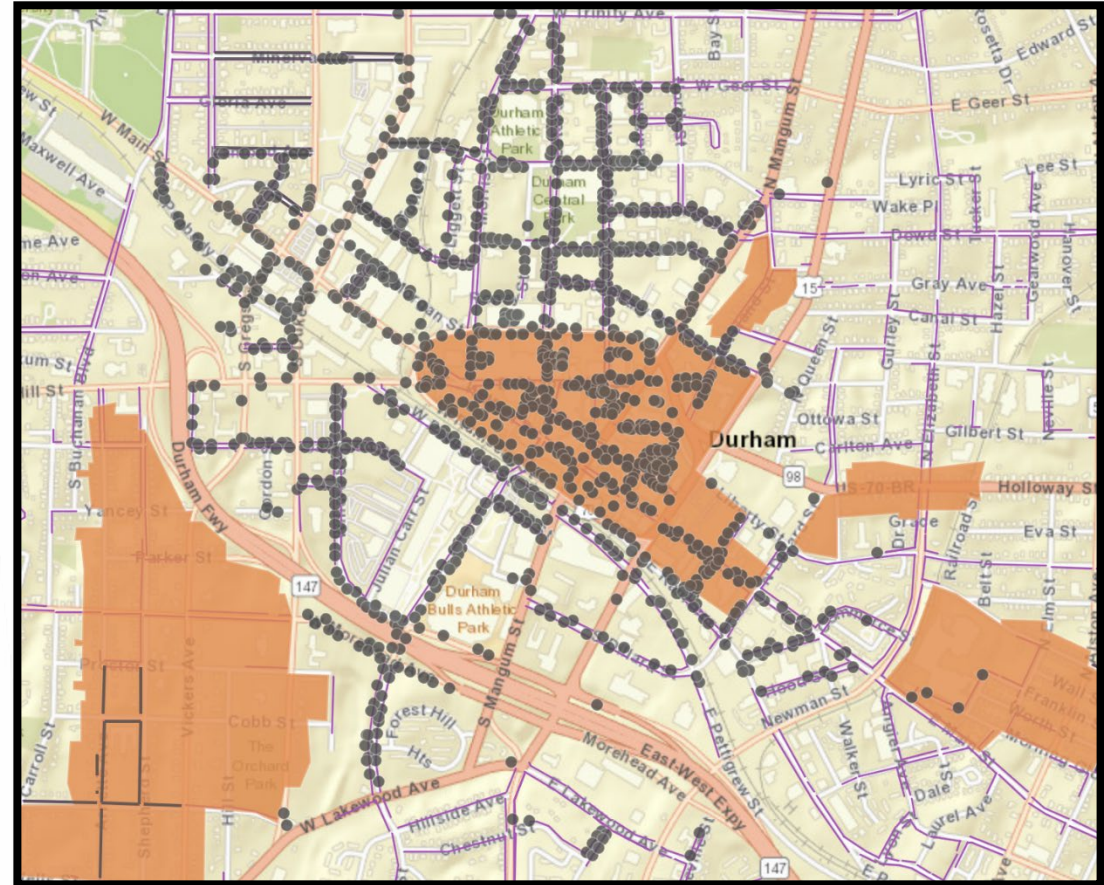


LAKE MICHIE OVERLOOK PARK

Sign Installation: Phase II

LEGEND

-  = public sidewalks
-  = existing sign post
-  = local historic districts



Sign Installation: Phase II




1000 sidewalk signs

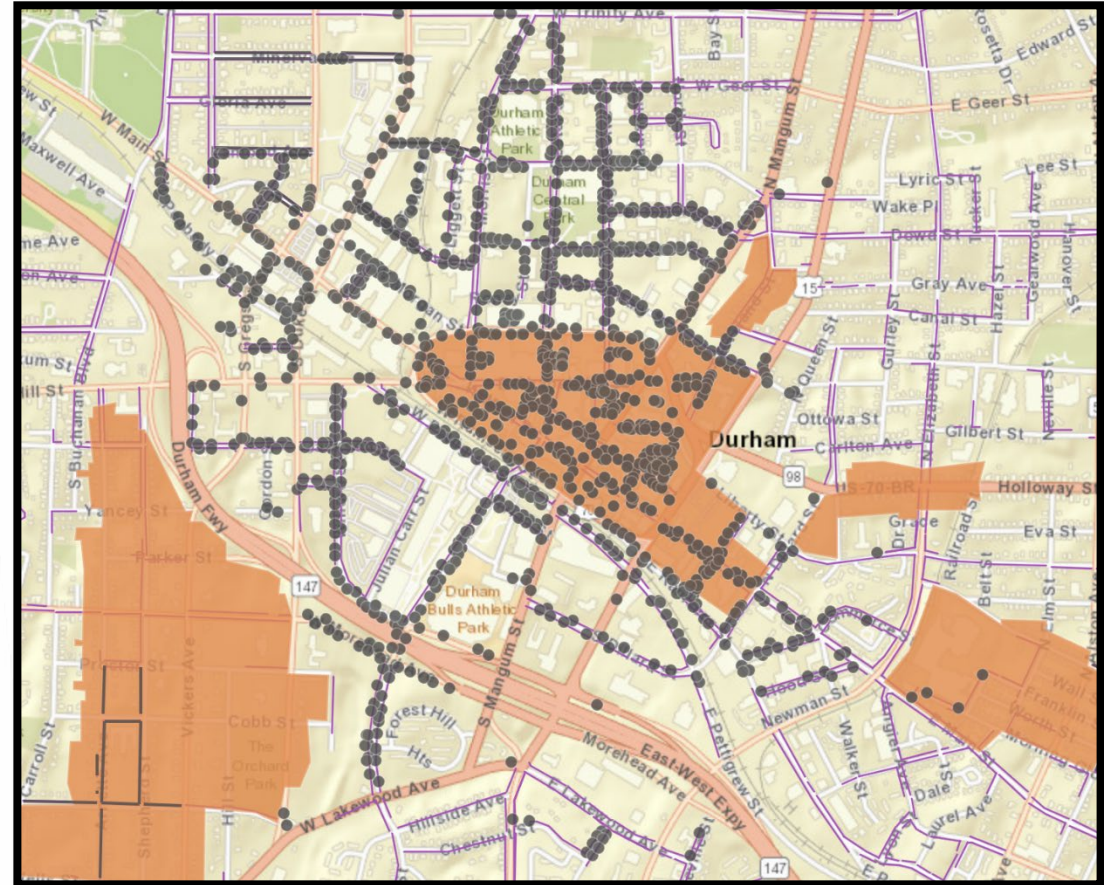
- Focus on high-traffic areas
- May include sidewalks around schools



Sign Installation: Phase II

LEGEND

-  = public sidewalks
-  = existing sign post
-  = local historic districts



Considerations...

Sign Update

Natalie Rich, MPH



Thank You!



Live. Grow. *Thrive.*