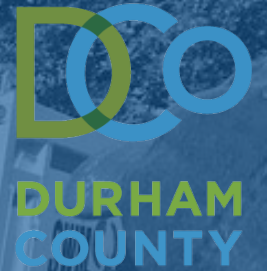


DURHAM NEIGHBORHOOD COLLEGE 2019



# City of Durham Solid Waste Management

Presented by Wayne Fenton, Assistant Director of Operations

# Solid Waste Mission & Vision

---

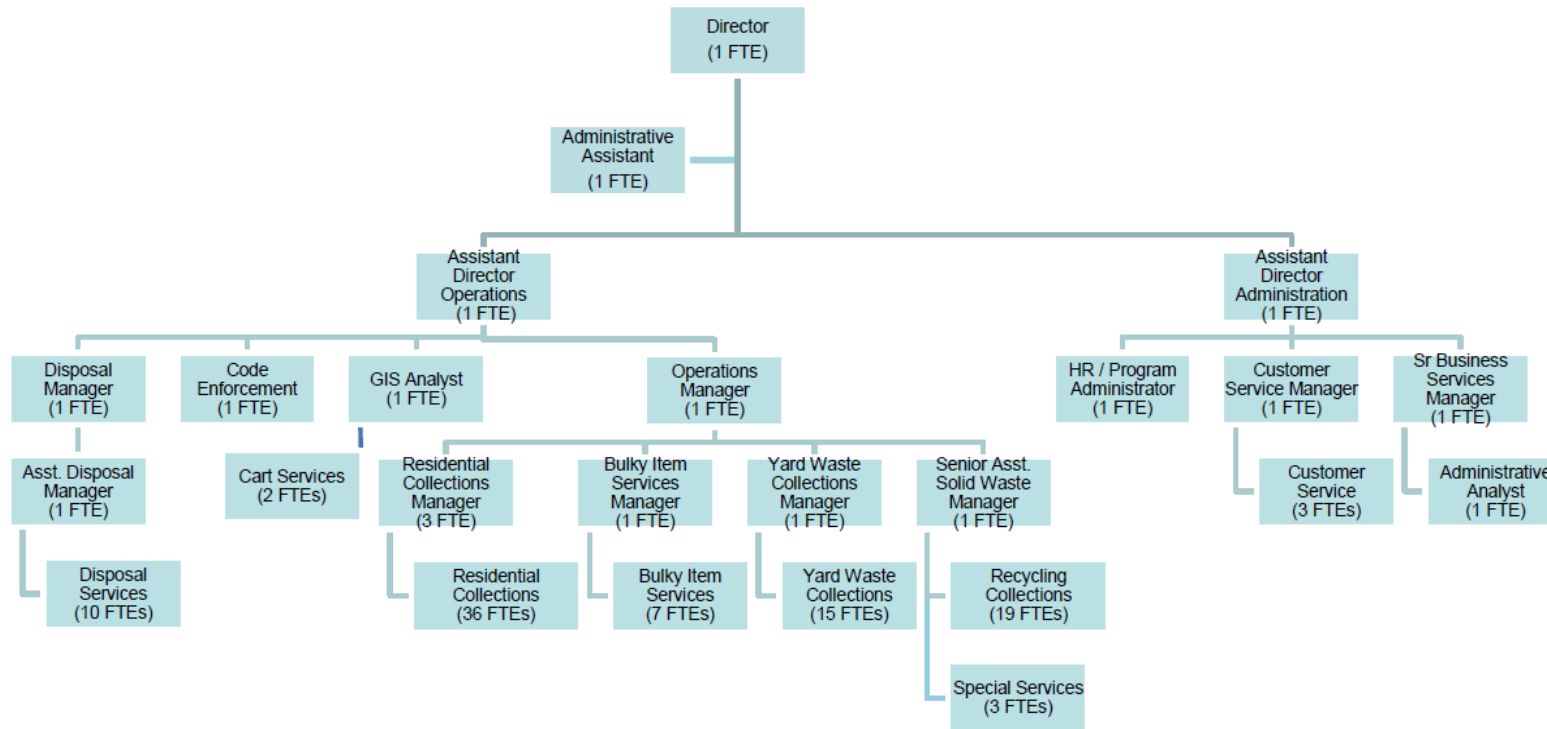
The Solid Waste Management Department partners with the community to provide exceptional customer service and outstanding waste collection, recycling, and disposal services in a safe, efficient, cost effective, and environmentally sound manner.



**Donald M. Long**  
Director



# Organizational Chart & Structure



## DIVISIONS:

### Administration & Finance

Provides administrative and planning support for all department initiatives and programs.

### Code Enforcement

Employs code enforcement officers that enforce city ordinances and levy fines for noncompliance.

### Residential Services

Manages waste collection services in Durham.

### Waste Disposal & Recycling Center

Manages the Waste Disposal and Recycling Center in Durham.



# Residential Services Overview

## Weekly Household Garbage Pick Up (Green bin)

## Biweekly Household Recycling Pick Up (Blue bin)

## Weekly Yard Waste Pick Up (Brown bin)

- Optional, fee-based program for collection of grass clippings, tree limbs, and leaves.
- Includes two bulky brush pick ups per year (call to schedule).

## Weekly Bulky Item Pick Up

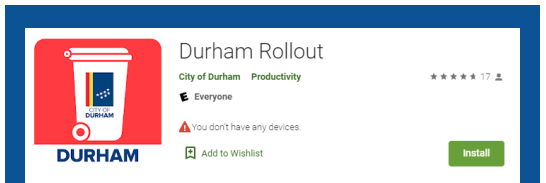
- Maximum of 3 bulky items can be placed out with garbage by 6 a.m. for next-day collection. Recommended to contact Durham One Call to request this service.
- Does not include televisions – television pick up appointment must be scheduled separately – maximum 32 inch with no broken parts or glass.

### REMINDERS:

- Place all carts at curb by 6 a.m. on collection day; remove carts from curb within 24 hours after pickup.
- Carts should be 3 feet away from other objects or carts, and no more than 3 feet from the curb.



Find your schedule:  
[durhamnc.gov/SolidWaste](http://durhamnc.gov/SolidWaste)



**Durham Rollout App**  
View your garbage and recycling schedule and receive collection notifications all from within this app.



# Waste Disposal & Recycling Center

Drop off center for solid waste, yard waste, recycling, and more.  
Fees do apply for some materials.

- **Household Hazardous Waste Center** (non commercial use only – no charge)  
Safely dispose of hazardous materials such as paint, gasoline, batteries, garden chemicals, and household cleaners.
- **Electronics Recycling** (no charge)  
Properly dispose of computers, cell phones, televisions, and electronics with no charge for residents.
- **SWAP Shop** (no charge)  
Drop off or pick out small working items such as appliances, electronics, furniture, paint, toys, and more for FREE!
- **Textile Recycling** (no charge)  
Recycle clothing, shoes, and other household textiles for free. Materials are diverted to be redistributed to the nation's secondhand market, sent to countries in need, or processed into reusable products.
- **Used Motor Oil, Antifreeze, Cooking Oil** (no charge)
- **Used Tires** (established gate rate)
- **Yard Waste** (established gate rate)



**2115 E. Club Blvd.**

- Mon-Fri, 7:30 a.m. to 4 p.m.
- Sat, 7 a.m. to noon.



# Collection of Recyclable Materials



## Recycling Collections Operations:

- 11 Collection Routes per Week.
- Bi-Weekly Recycling. Can have multiple carts if needed.
- Collection of recyclables from residential locations only.
- Collection teams do a good job at viewing recycling with goal of reducing contamination of recyclables.
- Collection teams have the ability to reject (“OOPS Tags”) recycling cart if it is observed to be contaminated.
- The “OOPS” tag notifies resident of what materials caused the rejection of the recycling and what they need to do for the team to come back and collect the recycling.

Most trucks hold between 6-8 tons of recycling and dump approximately two times a day.



# Transportation and Processing of Recyclables

## Waste Disposal and Recycling Center:

- Collection trucks deliver loads to the transfer station (2115 E. Club Blvd.) where loads are weighed for reporting purposes.
- Collection teams unload trucks into a designated bay on the Transfer Station Tipping floor.
- The City's Transfer Station is Operated by GFL (formally Waste Industries) and ALL the recycling material is loaded into empty hauling trailers.
- These trailers are transported to Sonoco Recycling in Raleigh, where they are weighed and unloaded.
- The material then goes through a processing (sorting) system (both hand and automated sorting) to remove contaminants and to group like materials together.
- The material is then baled and either sold to specific processors and/or end-users of recyclable materials (including Sonoco's packaging division).
- Sonoco Recycling receives recyclable materials from numerous communities in the Triangle.
- Only contaminants (unacceptable items) are delivered to landfill.



# Frequently Asked Questions

---

- **How much of our recycling ends up in the trash?**

Only contaminants (unacceptable items and materials such as plastic bags) are disposed of in the landfill. The City of Durham is fortunate to be in a contract with Sonoco Recycling which sells the material on the open market, and Sonoco also has its own processing facilities that reuses the recycling material to make their own products.



- **How much do City residents really recycle?**

Last year, the City Collections teams collected 17,752 tons. The Waste Disposal and Recycling Center also added an additional 2,323 tons for a total of 20,114 tons of recycling.

- **Why does the City not offer the same collection materials that other places take?**

We are only able to accept materials that our recycling processor accepts. Some places take different materials because they use a different processor than the City of Durham contracts with.





# Frequently Asked Questions

---

- **Why do you put recycling in the trash truck?**

This is a big misconception. Our trucks all look very similar, and similar trucks are routed to the same areas. In most cases, green and blue bins are collected using an “automated truck,” but the contents are handled separately, with trash going to landfill and recyclable materials going to Sonoco Recycling.

- **The collector that picked up my trash later came by and picked up my recycling. Why?**

Another big misconception. As it may be true that the same collector who picked up your trash also picked up your recycling, however that collector was now helping out the recycling truck. There are times we are short staffed and instead of the collector riding with the trash truck to dump out the load, the Supervisors will have the collectors help out the other teams, thus helping speed up the collection process. At no time do we put clean recycling in the trash unless the recycling cart is contaminated beyond the point of it being considered clean recycling, or the resident used the recycling cart for their trash cart. We do everything we can to ensure all materials go in the proper collection vehicle.



# Opportunities for Engagement

- **Sign up for alerts and messages from the Department with our “ReCollect App.”**

It’s a wonderful tool to view your collection calendar, sign up for reminders and updates, and search a list of which materials go where.

- **Attend E-Waste and Shred-a-thon events.**

Our next event is scheduled for October 19<sup>th</sup> and will take place at the County Stadium (750 Stadium Dr., 27704).

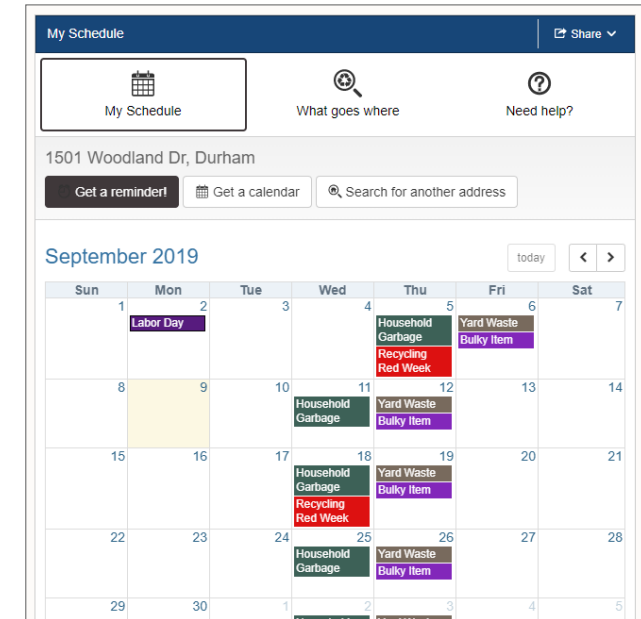
- **Tour Sonoco Recycling’s processing facility.**

Check our website for the next available dates.

- **Start (or continue) composting in your backyard.**

- **Get involved with civic groups that focus on recycling and waste reduction.**

- EAB, Keep Durham Beautiful
- Attend community events presented by your local HOA, church organization, and/or local school



Learn more at: [durhamnc.gov/SolidWaste](http://durhamnc.gov/SolidWaste)



# Final Thoughts

---

## What are we going to do about growing costs and restrictions for recycling programs?

Recycling programs and markets are continually monitored by Solid Waste Management team members. We continue to work with Sonoco Recycling to minimize our costs, while working to provide the cleanest and best materials possible.

The best thing we can all do in support of our local recycling programs is to only place materials that have been identified as acceptable in recycling containers, as contamination by unacceptable materials and items is the greatest problem facing the recycling industry today.

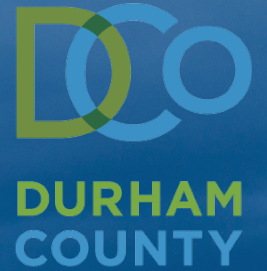
### PLEASE DO NOT PLACE THESE ITEMS IN YOUR BLUE ROLL-OUT CART:

- Plastic Bags, Wraps or Film
- Plastic Trays or Domes
- #6 Plastic or Foam
- Plastic Bottles from Motor Oil or Pesticides
- Wire Hangers
- Dishes, Mirrors or Bulbs
- Food or Food Containers with Debris
- Used Paper Napkins, Towels or Tissues
- Hardback Books or Adhesive-Backed Paper



STAY CONNECTED

# Solid Waste Management



**Donald Long**  
Solid Waste Director  
Donald.Long@durhamnc.gov

LEARN MORE AT: [DURHAMNC.GOV/SOLIDWASTE](https://durhamnc.gov/solidwaste)

REQUEST SERVICE VIA DURHAM ONE CALL – 919-560-1200