



2018 State of the County Health Report

Marissa Mortiboy

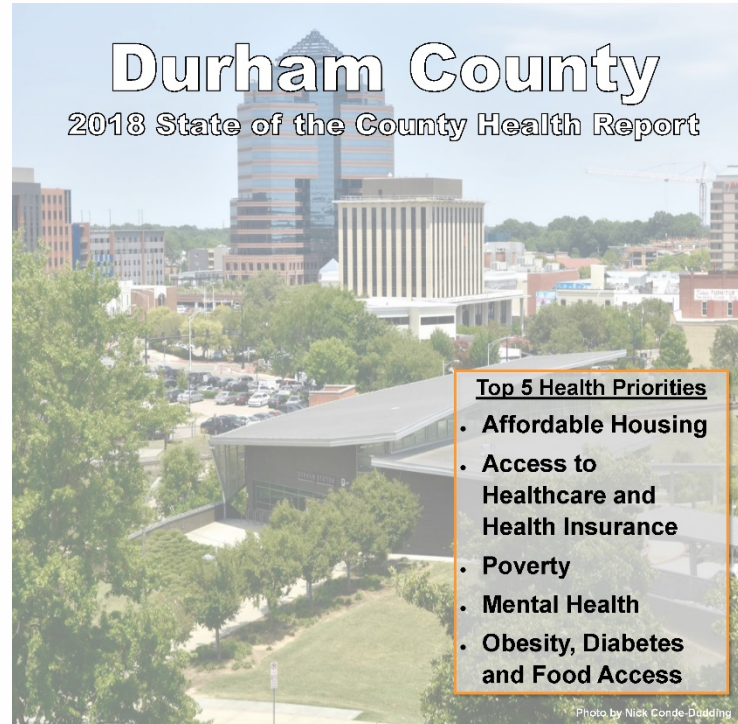
June 13, 2019



State of the County Health Report



2017
Durham County
Community Health
Assessment



This report provides an update from the 2017 Durham County Community Health Assessment (CHA) on the most current data highlighting demographics, leading causes of death, and the County's top five health priorities. Its purpose is to provide the community with information on the health of its residents and to serve as a resource for grant writing, local policies, budgets and programs.

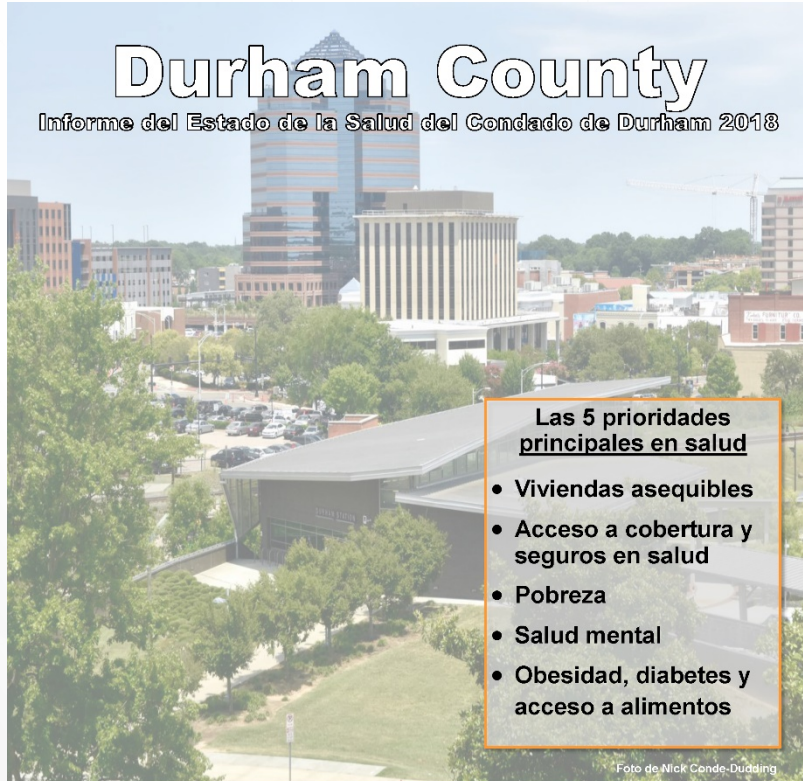
Electronic copies of this and other Durham County health reports are available at www.healthydurham.org
Printed April 2019



Done each year between Community Health Assessments to update on data and progress made on priorities



State of the County Health Report



Available in Spanish for the first time

Este informe proporciona una actualización a la Evaluación de Salud Comunitaria del Condado de Durham de 2017 (CHA, por sus siglas en inglés) acerca de los datos más recientes, en los que se destacan la demografía, principales causas de muerte, y las cinco mayores prioridades en salud del Condado. El propósito de este informe es proporcionar a la comunidad información relacionada con la salud de sus residentes y servir como recurso para la elaboración de solicitudes para subsidios, políticas locales, presupuestos y programas.

Copias electrónicas de este y otros reportes del Condado de Durham están disponibles en:

www.healthydurham.org

Impreso en abril de 2019



Public Health



Partnership for a
Healthy Durham
Better Together



Durham County Government

www.dconc.gov

Successes



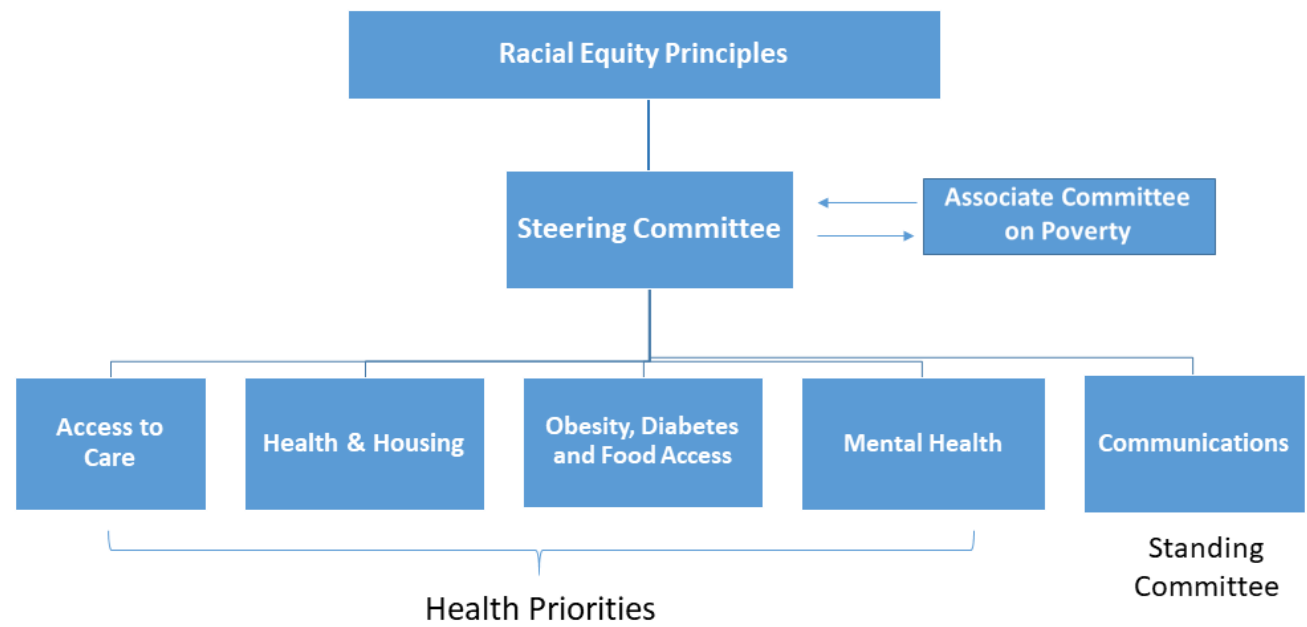
CHA Award



Durham Knows campaign

New Initiatives

Partnership for a Healthy Durham Structure for 2018-2021



New Health and Housing committee

Racial Equity Task Force

New Community Health Improvement Plan format



Emerging Issues

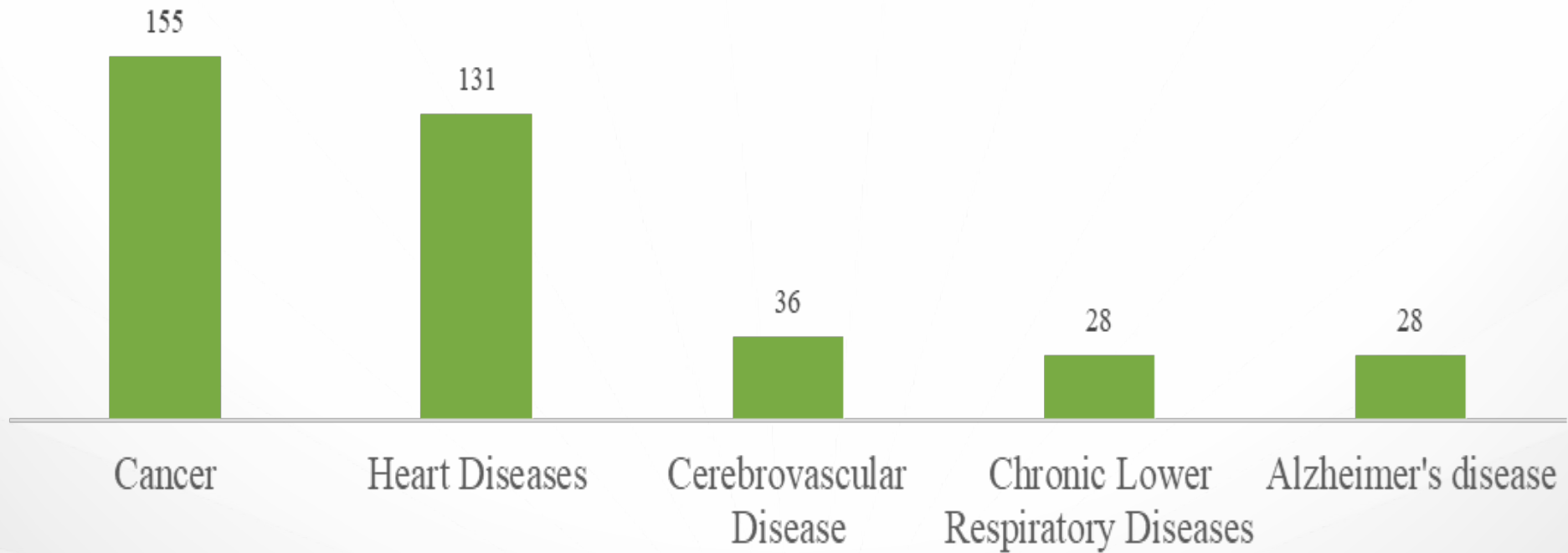


Immigration and ICE raids

Gentrification and Income Inequality

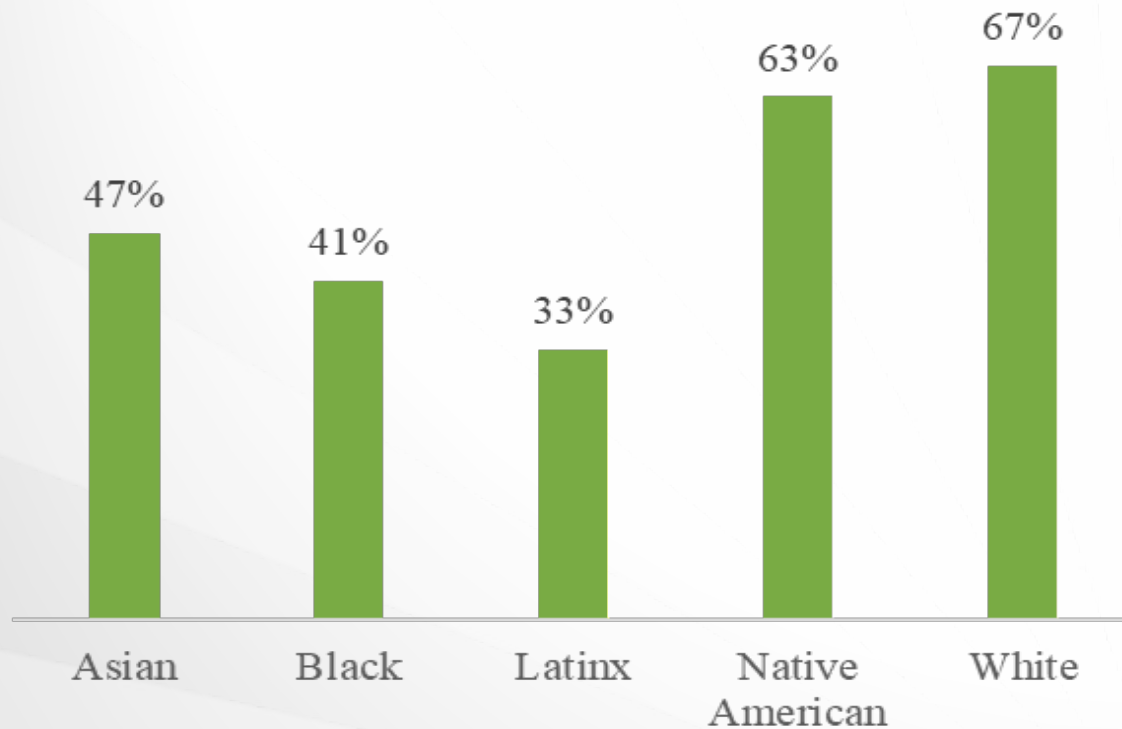
Leading Causes of Mortality

Leading Causes of Mortality,
Durham County, 2013-2017¹⁹
Age-adjusted death rates per 100,000 population



Affordable Housing

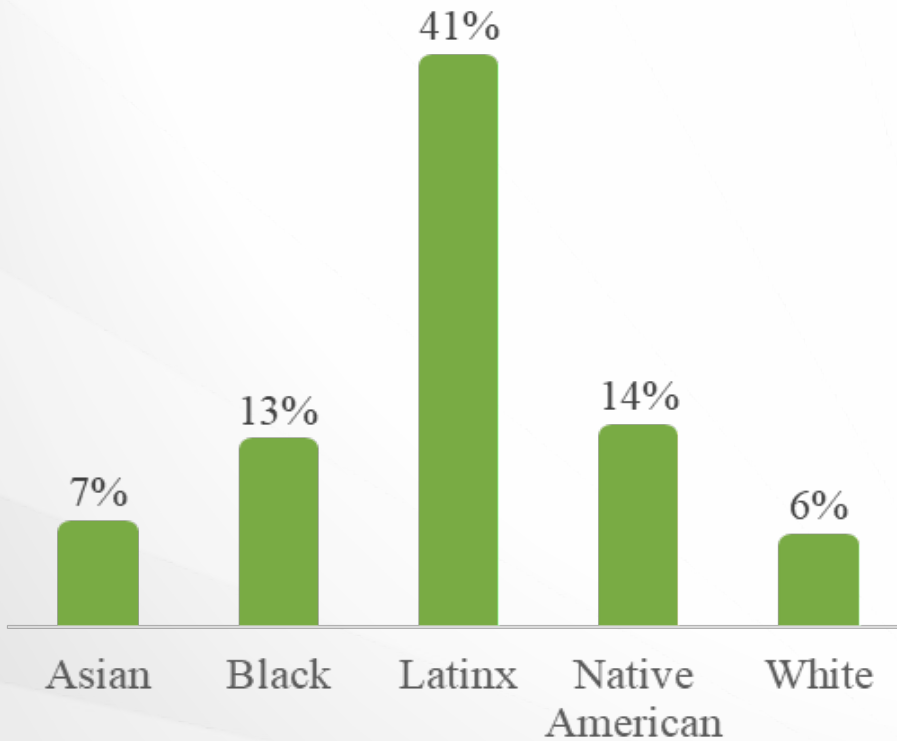
Percent of Durham Households that Own and Occupy a Home by Race and Ethnicity, 2013-2017⁶



The disparity is influenced by historical policies such as redlining

Access to Healthcare

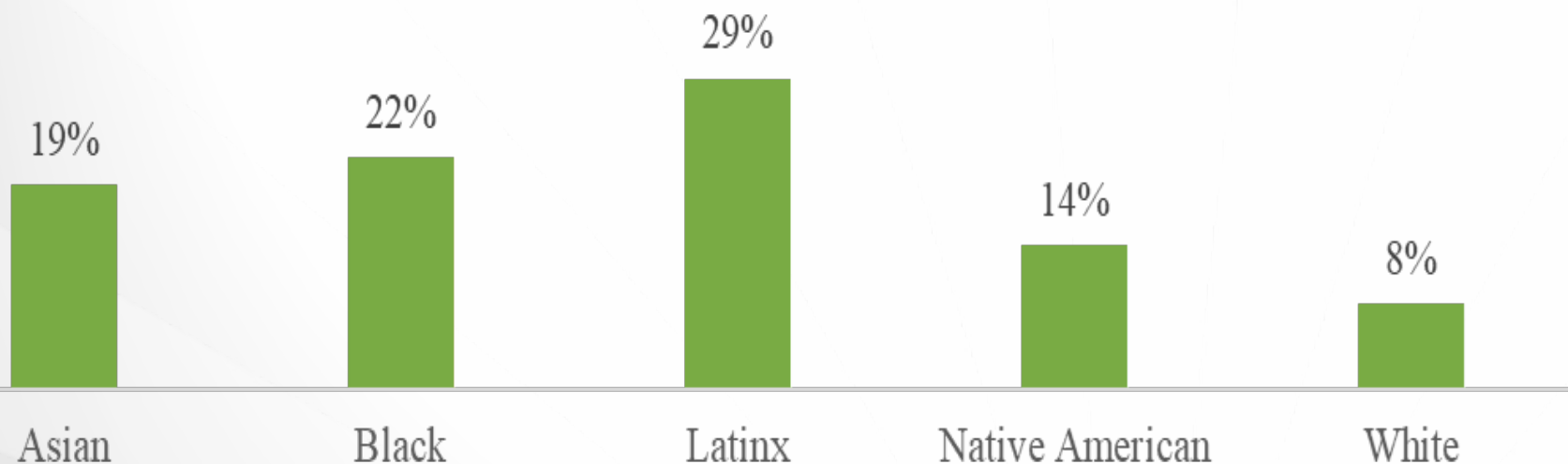
Percent of Uninsured Durham Residents by Race and Ethnicity, 2017⁶



The disparity in uninsured is influenced by factors such as cost of insurance, lack of employer based health plans and immigration status

Poverty

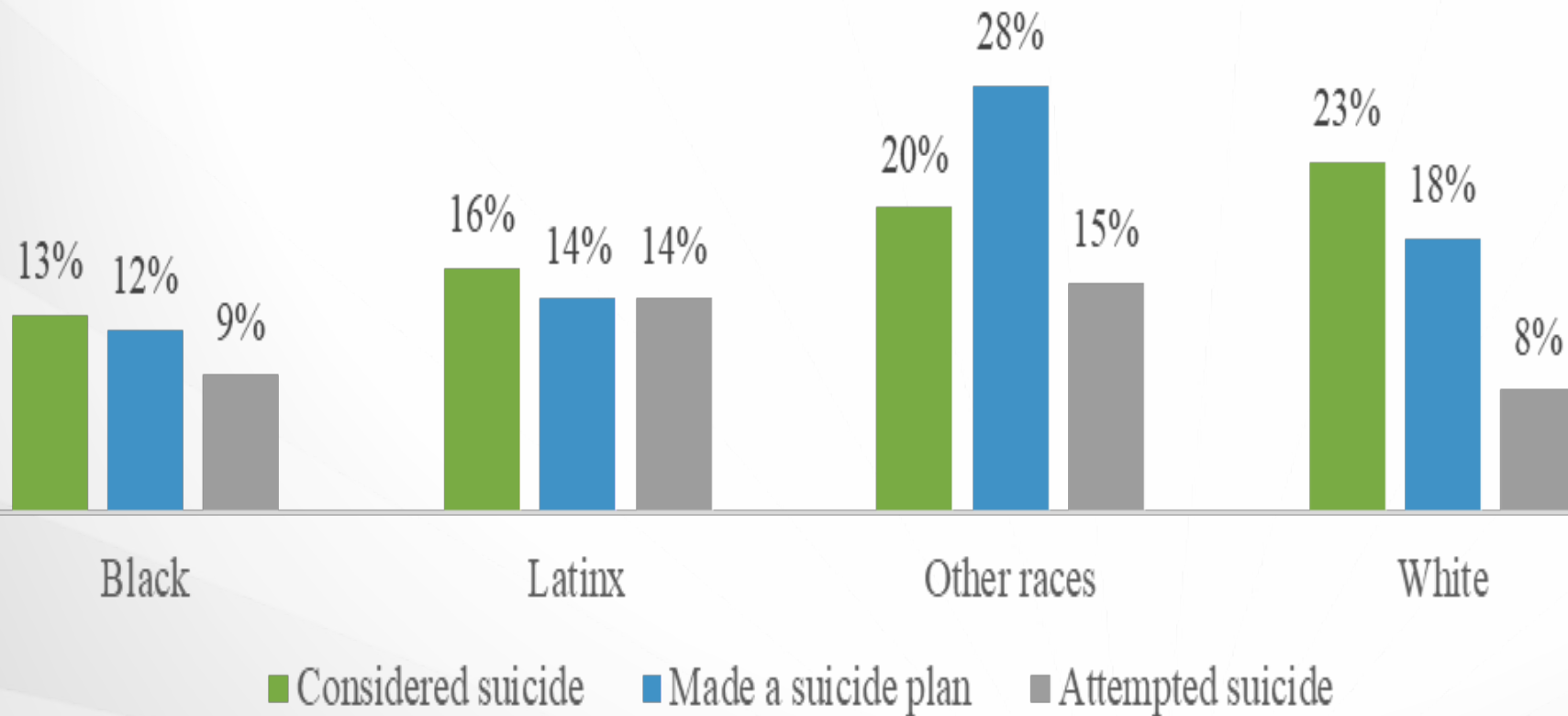
Percent of Population below the Poverty Level by Race and Ethnicity,
Durham County, 2013-2017⁶



The disparity in poverty is due to historical reasons such as unequal access to jobs and income inequality

Mental Health

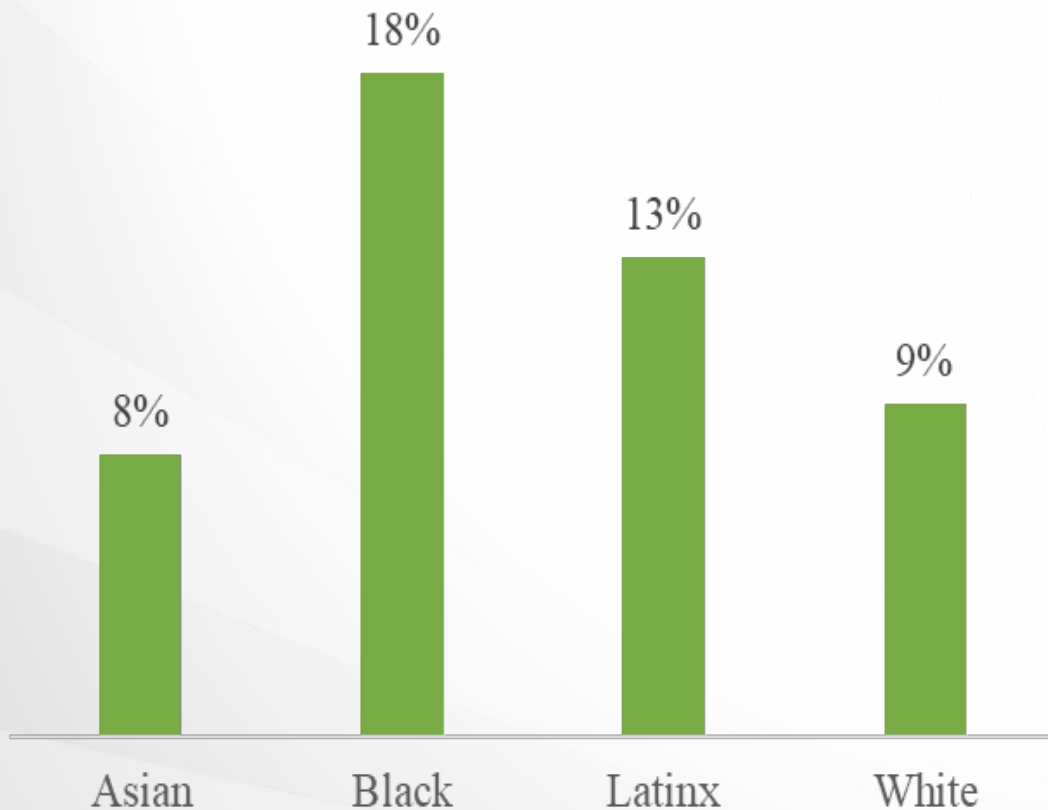
Suicide Ideation, Plans, and Attempts among DPS High School Students in 2017¹⁵



Differences in access to mental health services may contribute to inequities in attempted suicide by race

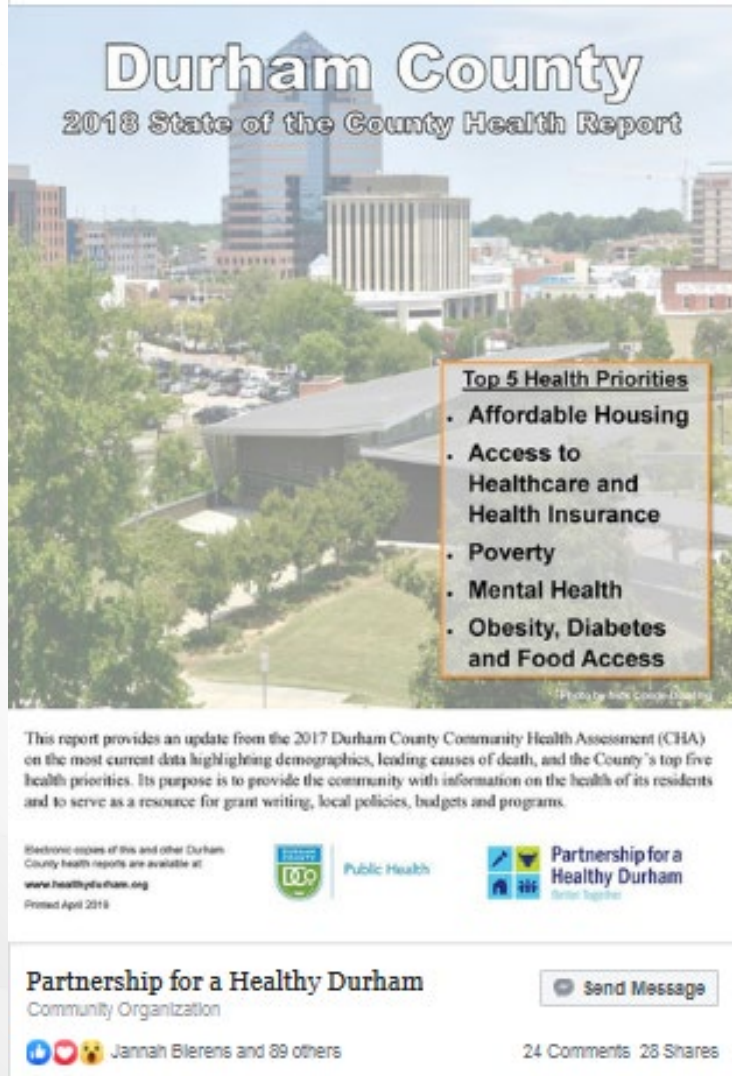
Obesity, Diabetes and Food Access

Type 2 Diabetes Prevalence among Duke Patients by Race and Ethnicity, 2017¹⁷



Policies that have forced people of color to live in neighborhoods where it is harder to access safe place to exercise healthy foods have lead to disparities in obesity and diabetes

Sharing 2018 SOTCH





Durham County
2018 State of the County Health Report

Top 5 Health Priorities




- Affordable Housing
- Access to Healthcare and Health Insurance
- Poverty
- Mental Health
- Obesity, Diabetes and Food Access


This report provides an update from the 2017 Durham County Community Health Assessment (CHA) on the most current data highlighting demographics, leading causes of death, and the County's top five health priorities. Its purpose is to provide the community with information on the health of its residents and to serve as a resource for grant writing, local policies, budgets and programs.

Electronic copies of this and other Durham County health reports are available at www.healthyeurham.org
Printed April 2018

 Public Health  Partnership for a Healthy Durham
Join together

Partnership for a Healthy Durham
Community Organization

   Jannah Blerens and 89 others



24 Comments 28 Shares

One of most highly engaged posts on Partnership's Facebook page ever

Where to Find Reports



ABOUT US COMMITTEES RECENT HEALTH DATA

Register today at tinyurl.com/DurhamCHA

2018 State of the County Health (SOTCH) Report Available in English and Spanish

The SOTCH report is an update in years between Community Health Assessments. The 2018 SOTCH Report updates statistics from the 2017 Community Health Assessment and provides progress on the County's five health priorities of Affordable Housing, Access to Care, Poverty, Mental Health, Obesity, Diabetes and Food Access. For the first time, the SOTCH is also available in Spanish.



www.healthydurham.org



DURHAM
COUNTY

DCO
NC

★ ★ ★ 1881 ★ ★ ★

Thank You!



Live. Grow. *Thrive.*